

# IT Report

*Robert Merion, MD  
Chair, IT Advisory Committee*

*Alex Tulchinsky  
Chief Technology Officer*

*June 24, 2014*

# Agenda

- Opening Remarks

Dr. Robert Merion

- IT Update

Alex Tulchinsky

# IT Advisory Committee

## Current Members

- Robert Merion, Chair
- James Gleason
- Marlon Levy

## Advisors

- Haris Basit
- Arthur Glasgow
- Tom Yackel

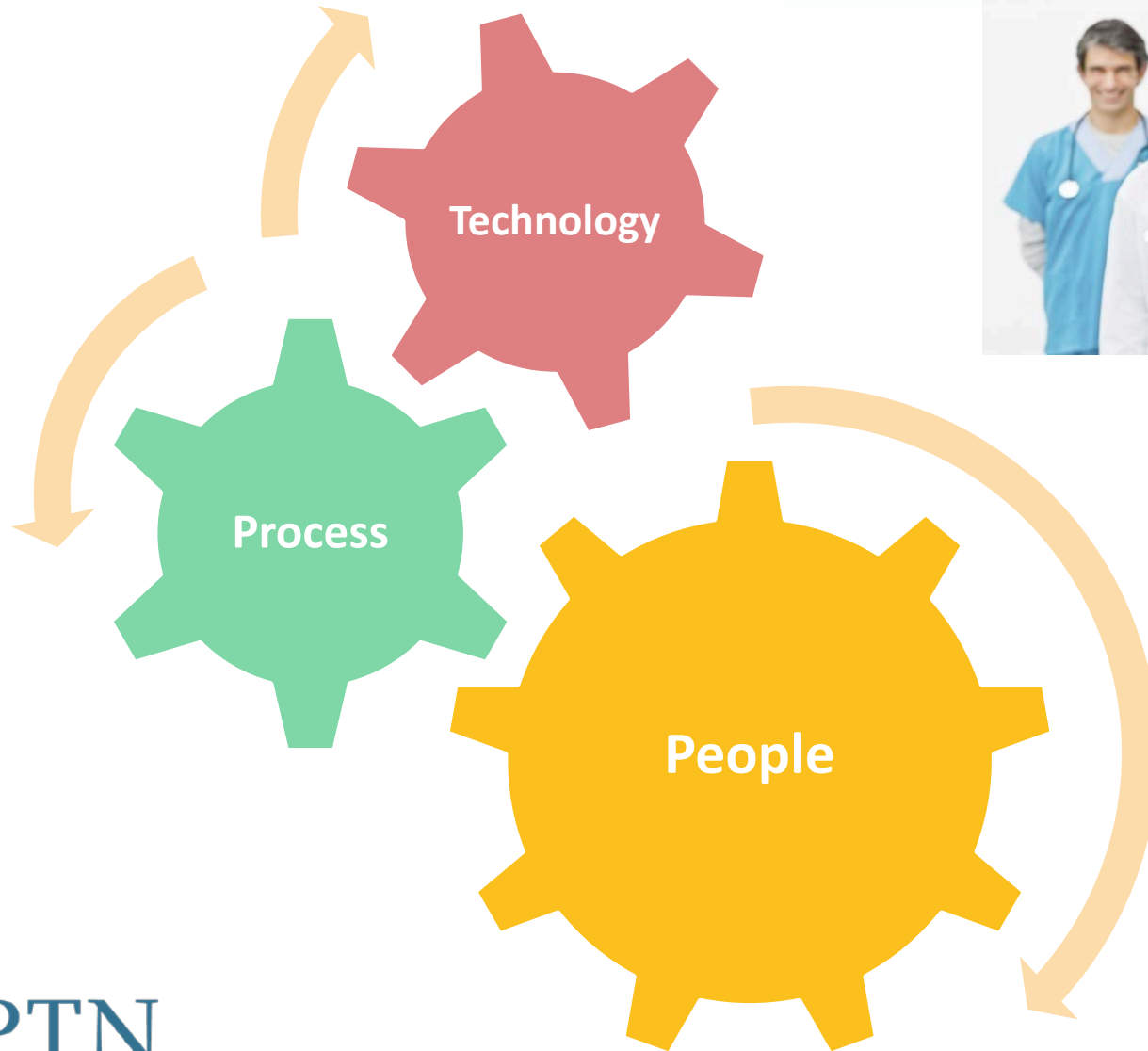
## New Members

- James Gleason, Chair
- Lloyd Ratner
- Susan Stuart

## Advisors

- Will be chosen by the new Committee

# IT Update



# IT Update

---

Current state: technology, people, process

---

Establish credibility

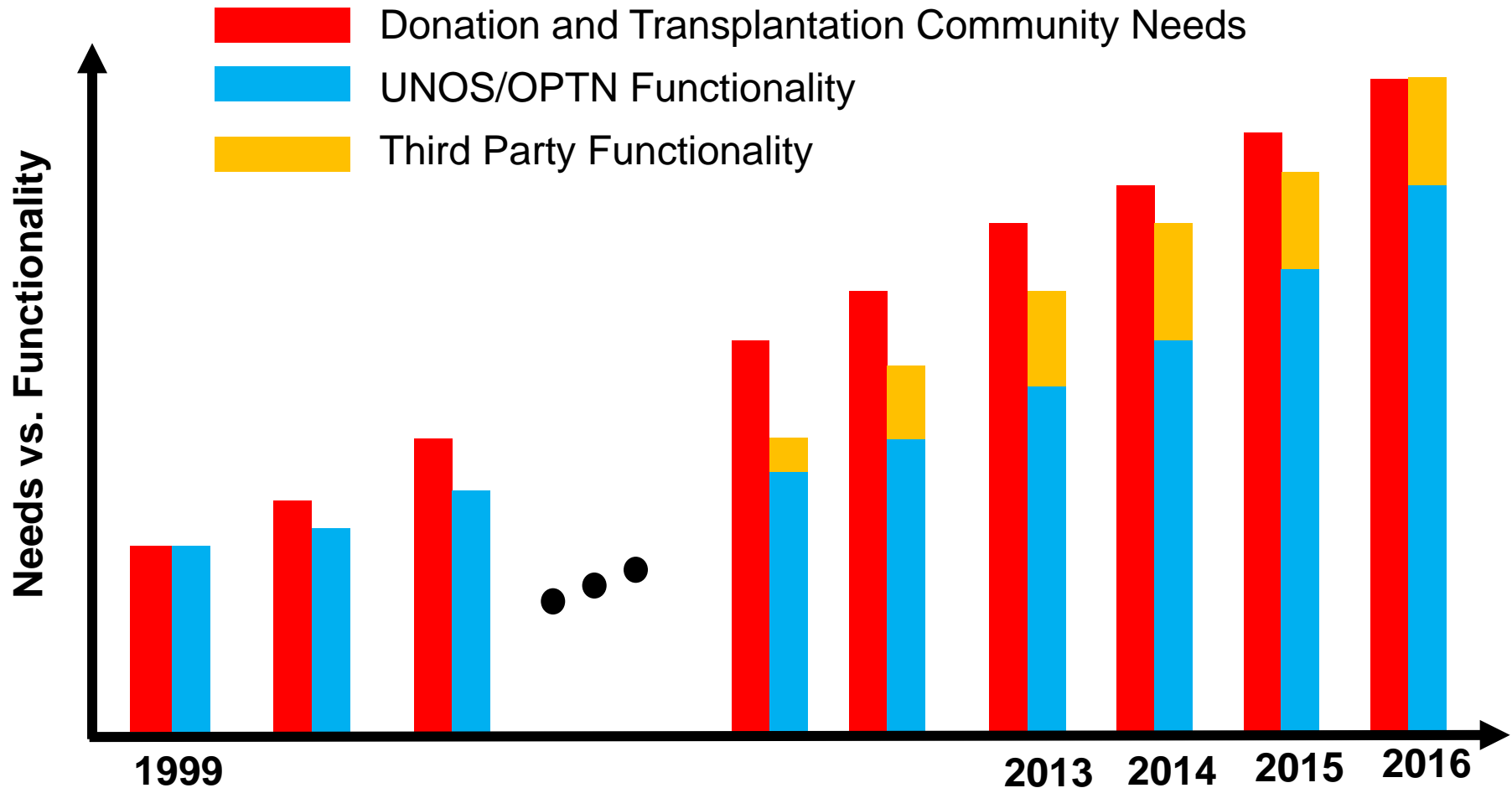
---

Engage the community

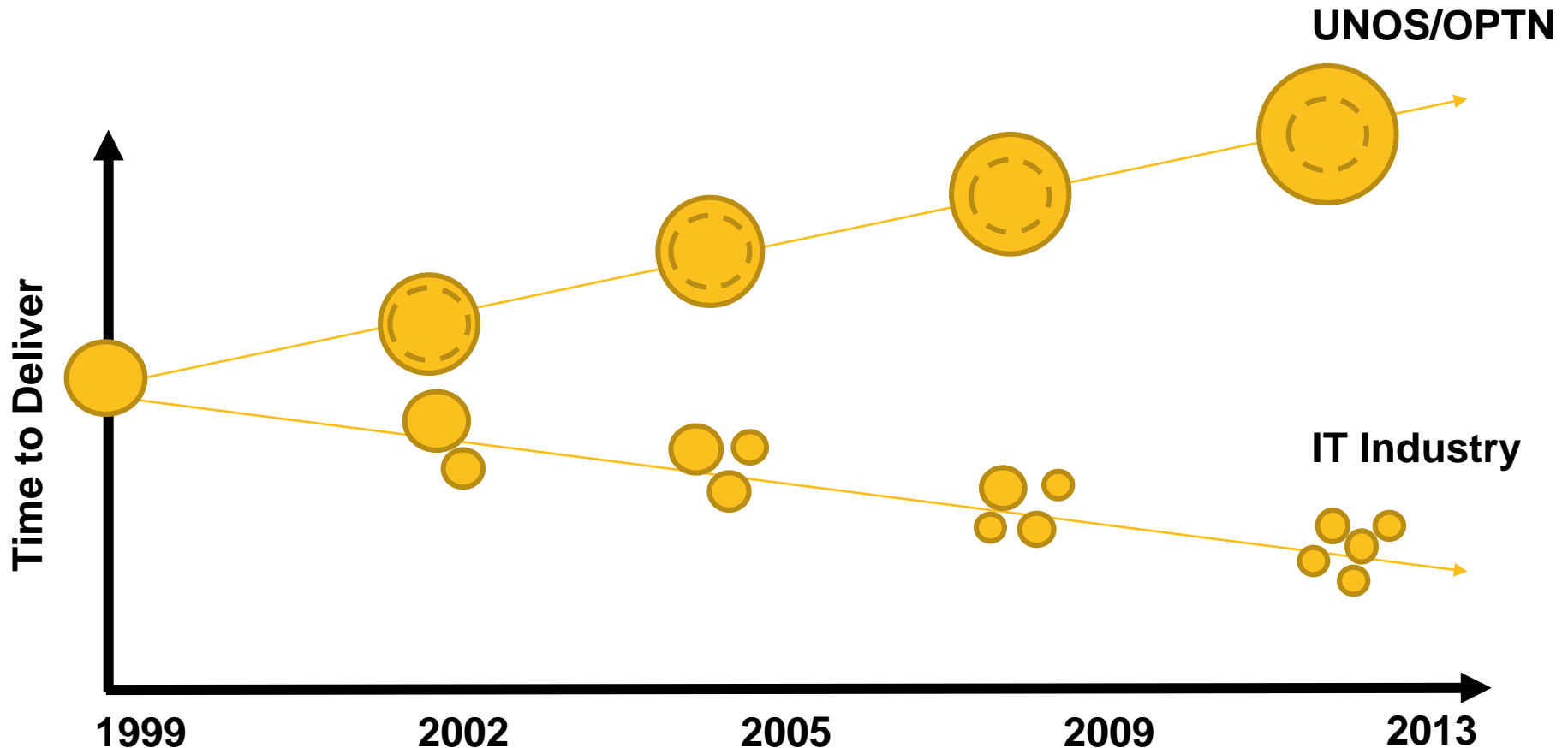
---

Build and execute on technology roadmap

# Donation and Transplantation IT Needs



# Modularity Drives Time to Market

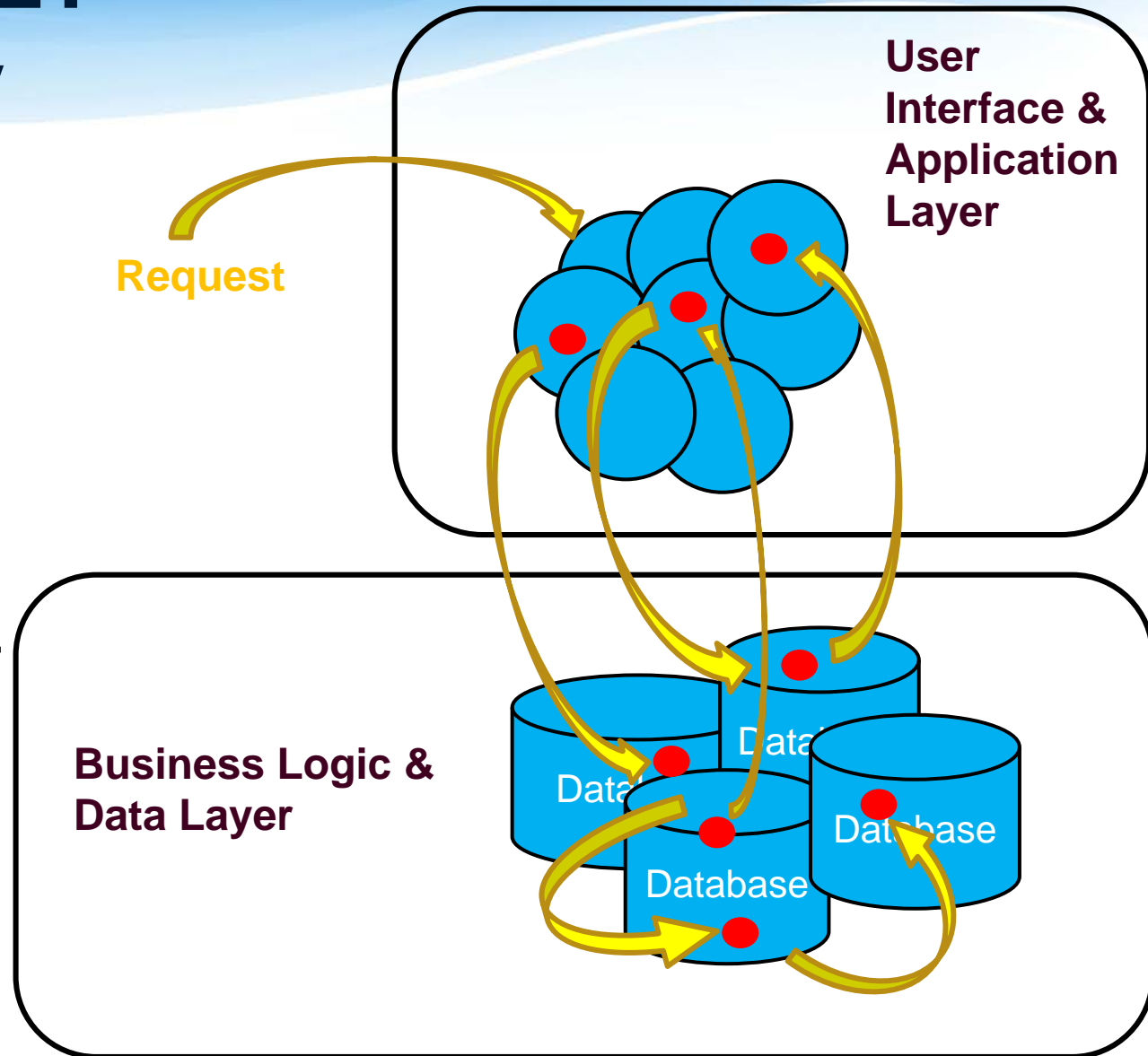


# Current UNET Technology



Small Changes ...

Become Big Efforts...



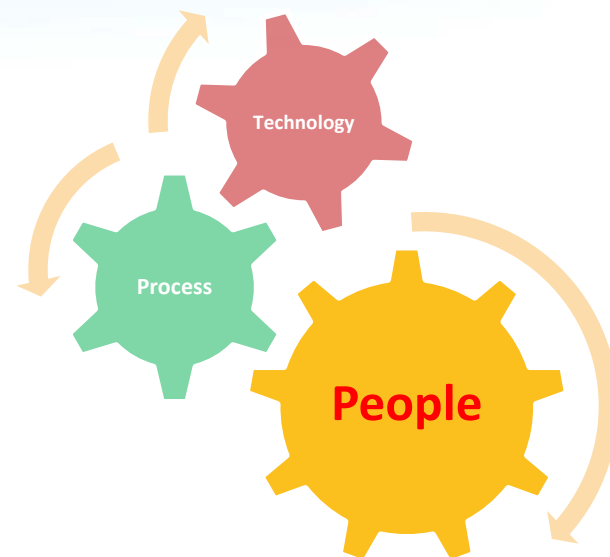


# IT Staffing / Organization Update

## June 2013 – June 2014

### Filled and Open Positions

- 58 positions filled
- 22 vacant positions
  - 8 posted positions
  - 14 positions on hold



### Organization

- Go-forward organization – *July 2014*
- [Re]define roles – *July & August 2014*
- Identify and fill skill gaps – *October 2014*
- Organizational Capacity – *October 2014*

# Work Completed Since November 2013

## Building credibility by delivering on commitments

## Released on

- Kidney Paired Donation (KPD) December 2013
- Modify requirements for mandatory HTLV-1/2 testing for all potential donors January 2014
- Reorganize hemodynamic data on adult heart Status 1A justification form February 2014
- Kidney Allocation System (KAS) – Ki/PA Wait Time March 2014
- Calculated Panel Reactive Antibody (CPRA) March 2014
- Modify Patient Safety Part 1: safety data entry and categorization May 2014
- VCA Program Type Added to Membership Application May 2014
- KAS – Phase 1 (Three major releases) June 2014
- DonorNet Enhancements (Non Policy) April 2014

# BOD Projects in Progress

- KAS Phase 2  
• Integrate EPTS calculation into a national kidney allocation system  
December 2014
- LAS – add bilirubin to lung algorithm  
• Add parameters for survival modeling  
• Provide calculation results of wait list urgency and transplant survival measures to users  
November 2014
- Uniform National Pancreas Allocation  
• Create a new kidney/pancreas and pancreas allocation system  
October 2014
- TIEDI and Office of Management and Budget (OMB) changes  
January 2015

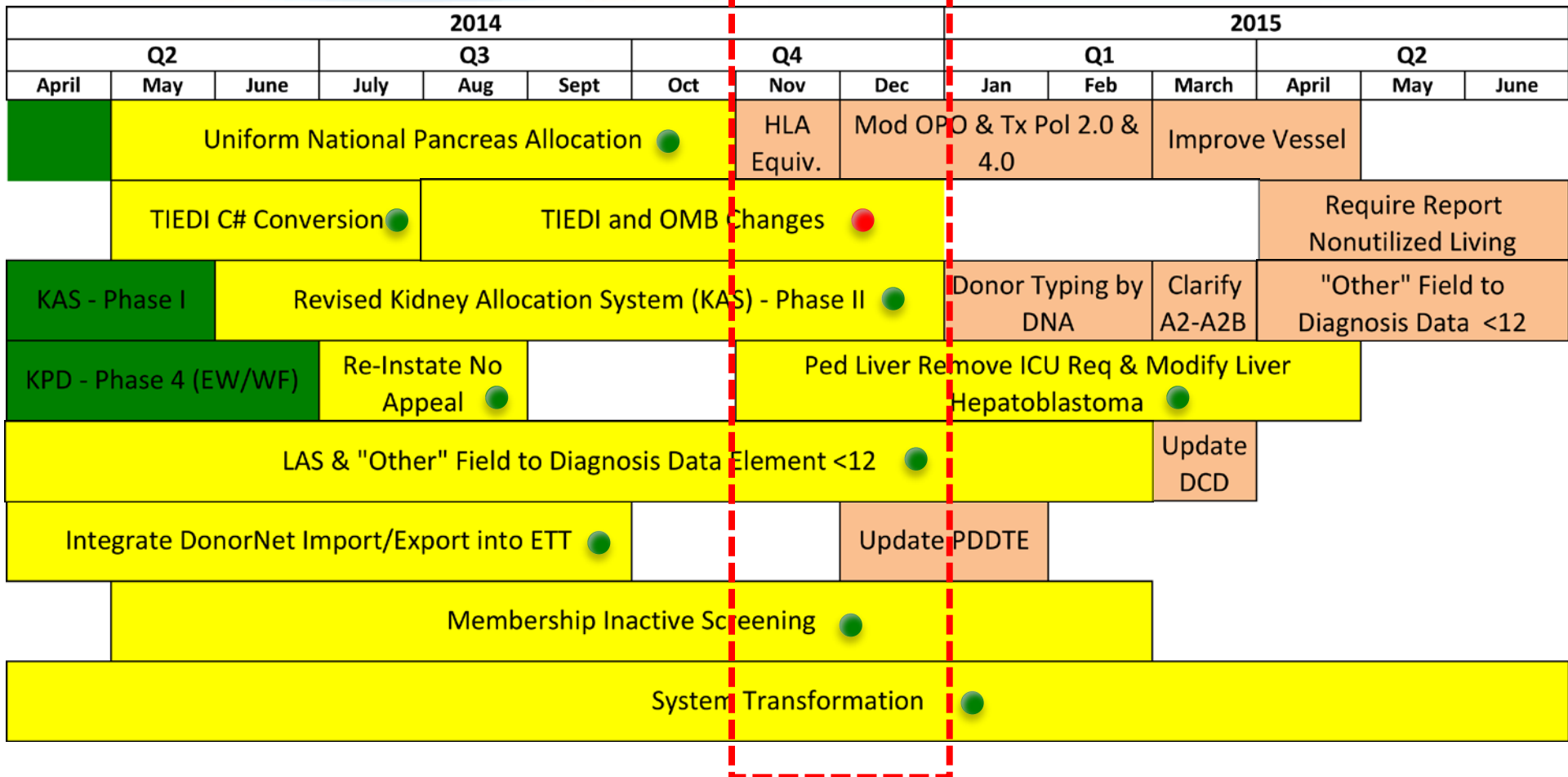
# Non-Policy Projects in Progress

- Electronic Tracking and Transport (ETT)
    - Integrate DonorNet's import/export feature
  - OPTN Website Redesign
  - Screen candidates at Inactive Programs
  - SharePoint 2013
  - Password Reset
- Sep 2014
  - Sep 2014
  - Nov 2014
  - June 2014
  - November 2014

# Upcoming Projects

- BOD: Reinstate the “No Appeal/No Withdraw” button for denied MELD/PELD exceptions
- Improvements to vessel disposition reporting
- BOD: Modify OPO and Transplant Center requirements
- BOD: Clarify data entry screens for A2 and A2B in Unet
- BOD: Potential Donor-Derived Disease Transmission Event (PDDTE) form
- BOD: Ped liver remove ICU requirement & modify ped liver hepatoblastoma
- BOD: Update HLA Equivalency tables
- Membership Form Automation
- UNET Technology Rebuild

# IT Work Plan



Complete  
In Progress  
Future

● On Schedule/Budget  
● Off Schedule/Budget

# Engage with the Community

## Establish Customer Council / Users Group

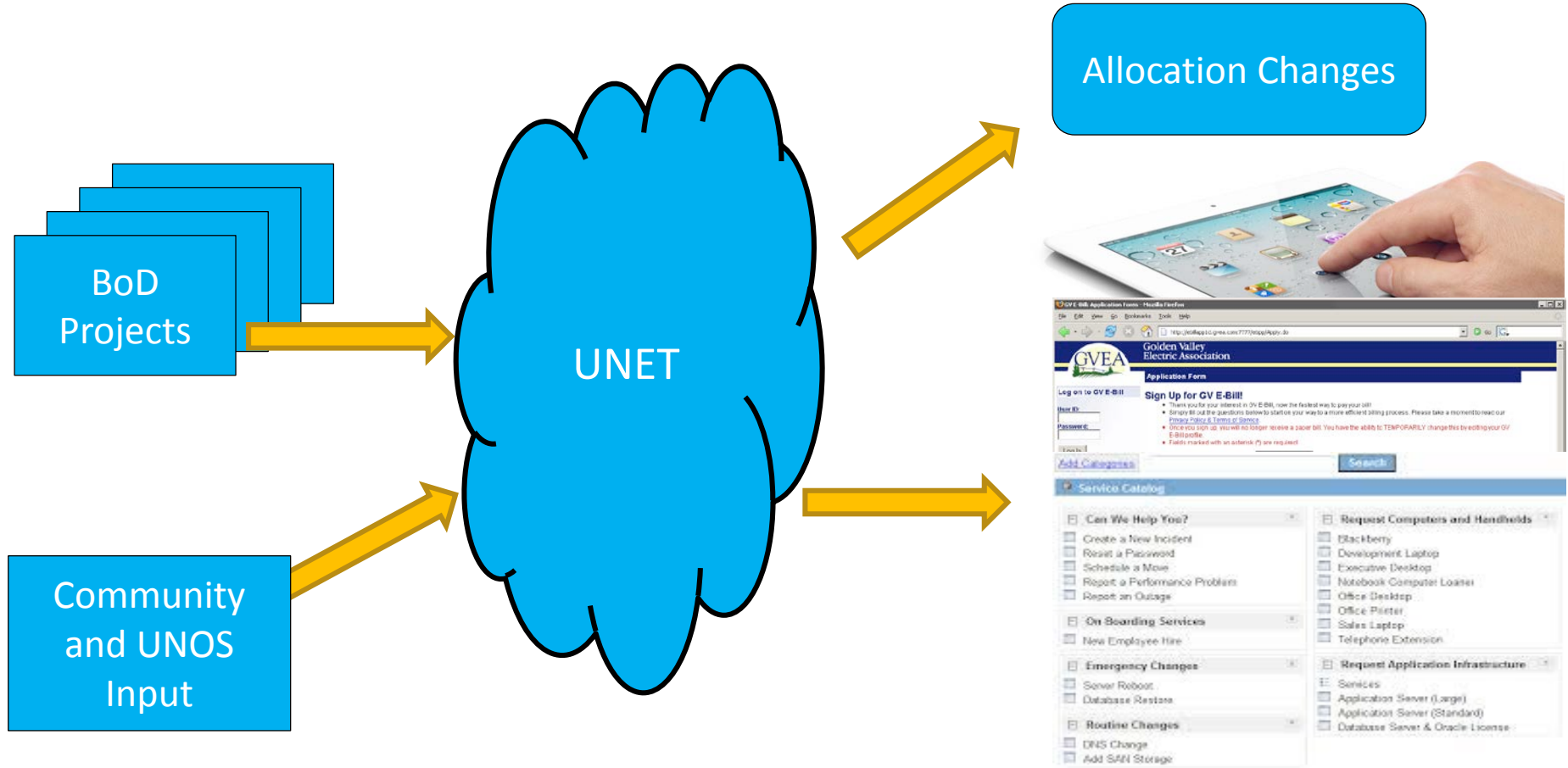
### ▪ Objectives

- Understand the customer
- Engage community in solution building
- Deliver right solutions ... faster
- Improve user experience

### ▪ Target audience

- UNET users, practitioners

# Beyond Just Policy Driven Change





# Business Continuity



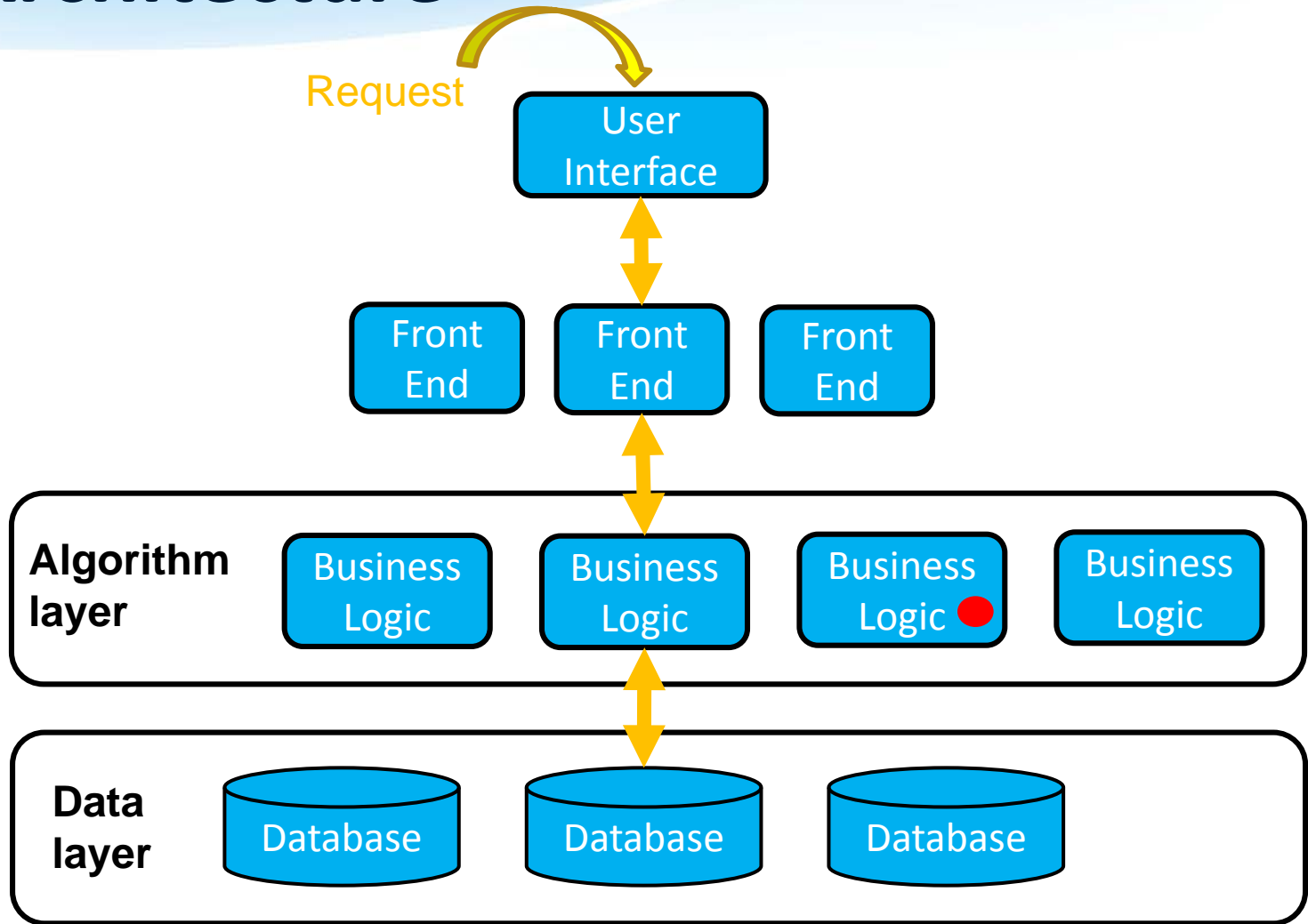
- The current disaster recovery site
  - is not a practical solution to continuing operations
  - Capacity constraints due to manual efforts and system resources
  - Reverting back to primary site is difficult and time consuming
- Initial Phase Goal – October 2014
  - Define realistic functional continuity requirements
  - Determine the gaps
  - Develop a plan and schedule to close the gap and provide the proper level of business continuity



# Target Architecture

Modular  
Services  
operating  
independently  
of one another

Small  
changes  
have  
limited  
impact



# Getting to the Target Architecture

## ▪ IS NOT

- An “All at once” project
- Stop all other work
- Short term effort

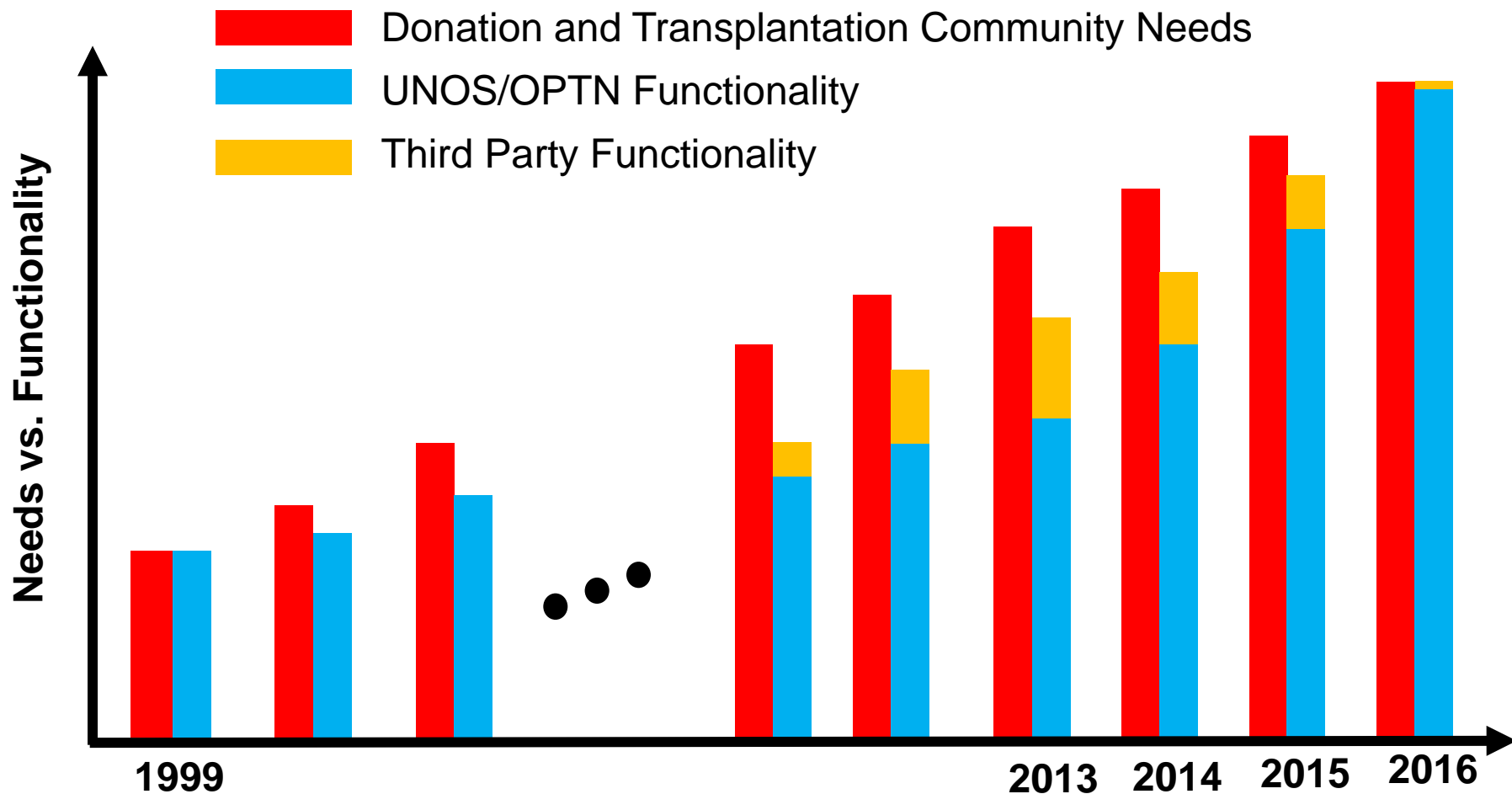
The best time to plant a tree was 20 years ago. The second best time is now.

-Chinese Proverb

## ▪ IS

- A fundamental change to how we build things going forward
- An incremental effort that is part of every project
- Worth doing and worth starting now

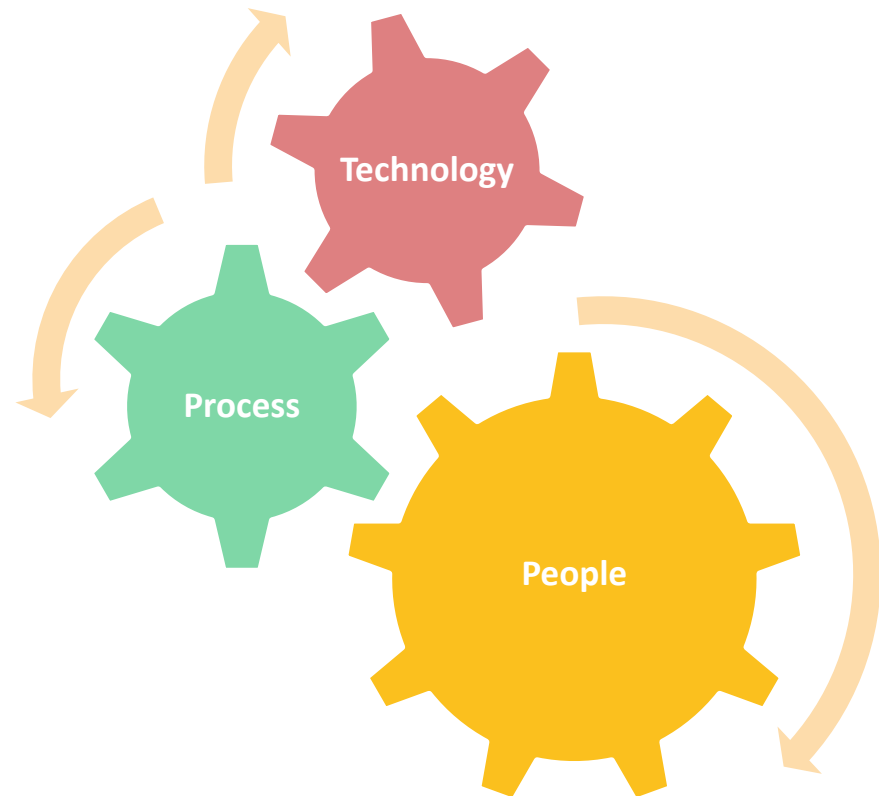
# Donation and Transplantation IT Needs



# UNOS IT – Becoming a Catalyst

Move UNOS IT from a culture of maintenance to one of service

- Increase functionality
- Deliver solutions faster
- Improve user experience
- Engage community more
- Empower users



**Thank you**

OPTN

