

# OPTN/UNOS Histocompatibility Committee

Lee Ann Baxter-Lowe, PhD, Chair  
Dolly Tyan, PhD, Vice Chair

*June 24-25, 2013  
Richmond, VA*

# Ongoing Committee Initiatives

## Histocompatibility Policy Rewrite

- Resolve 'parking lot' items flagged from plain language policy rewrite
- Eliminate duplicative standards with ASHI/CAP
- Improve typing accuracy and process for resolving discrepancies
- Expand HLA typing requirements for deceased donors

# Ongoing Committee Initiatives

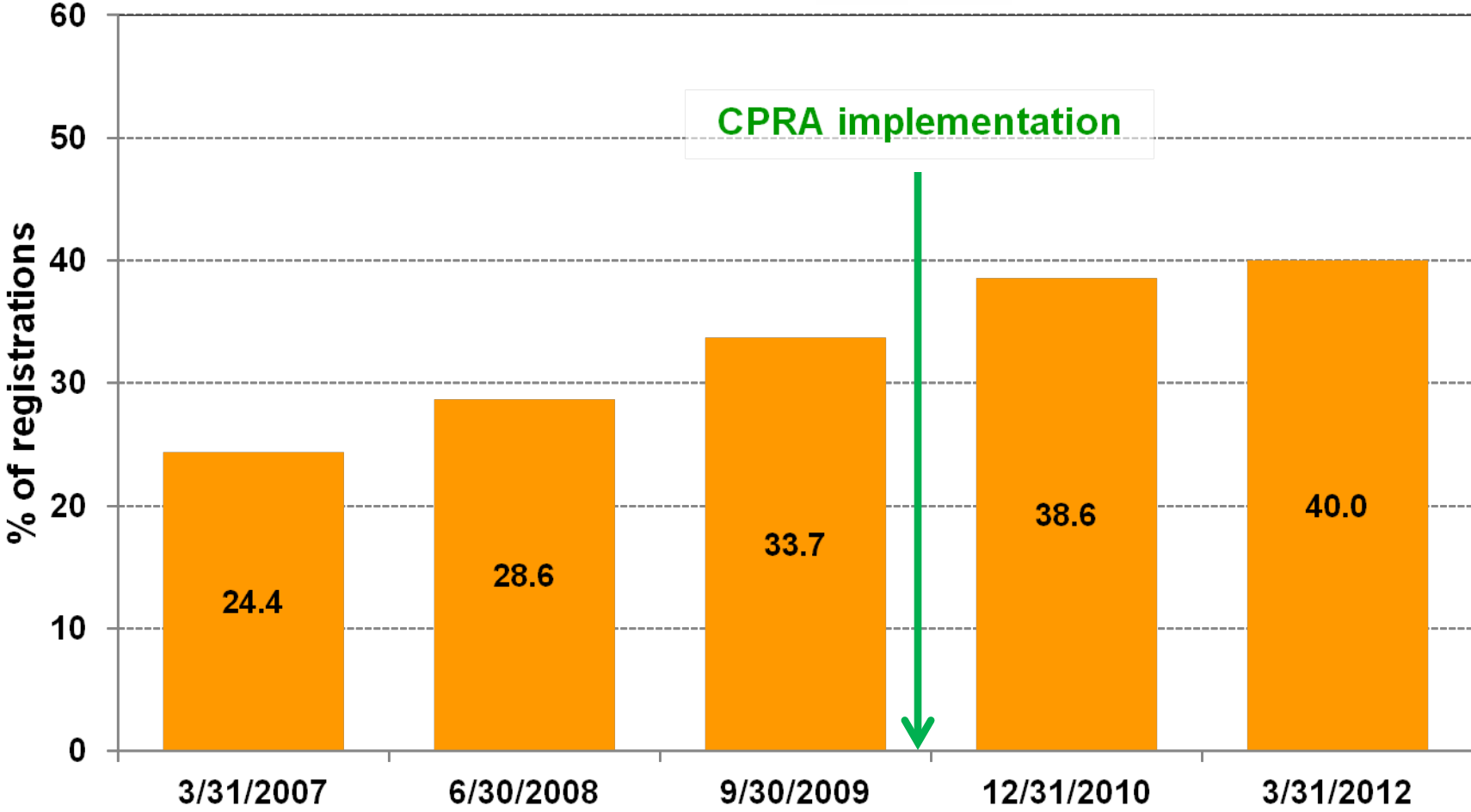
## Histocompatibility Bylaws Rewrite

- Expanded definition
- Required elements for written agreements
- Addition of General Supervisor as key personnel
- New deadlines and documentation required for changes in key personnel and applications for new labs
- Enhanced performance metric: HLA Typing

# Ongoing Committee Initiatives

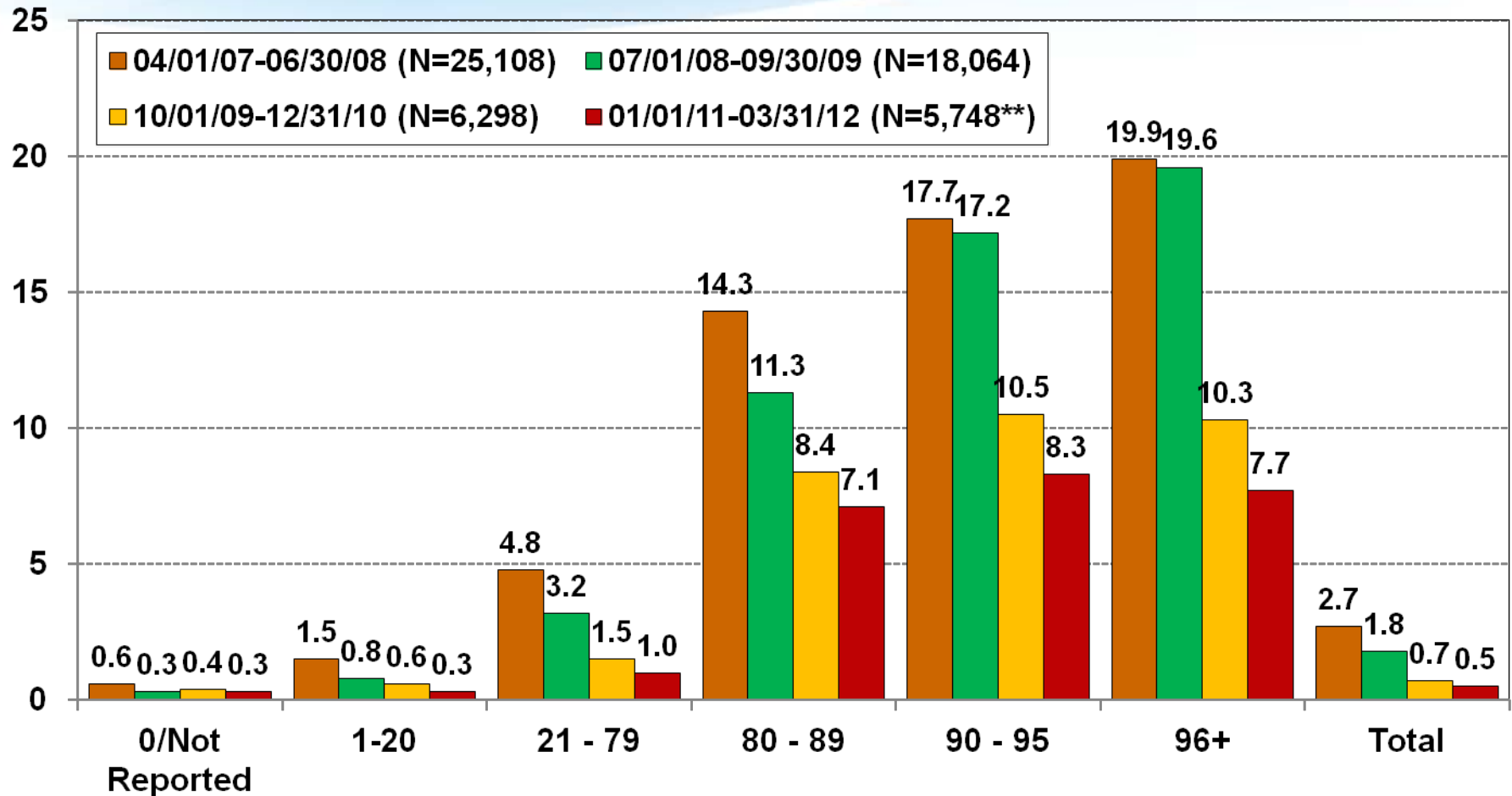
- Monitoring Calculated Panel Reactive Antibody (CPRA)

# Percent of registrations with one or more unacceptable antigens reported\*



\*Adult kidney alone registrations

# % of kidney offers refused due to a positive crossmatch\*

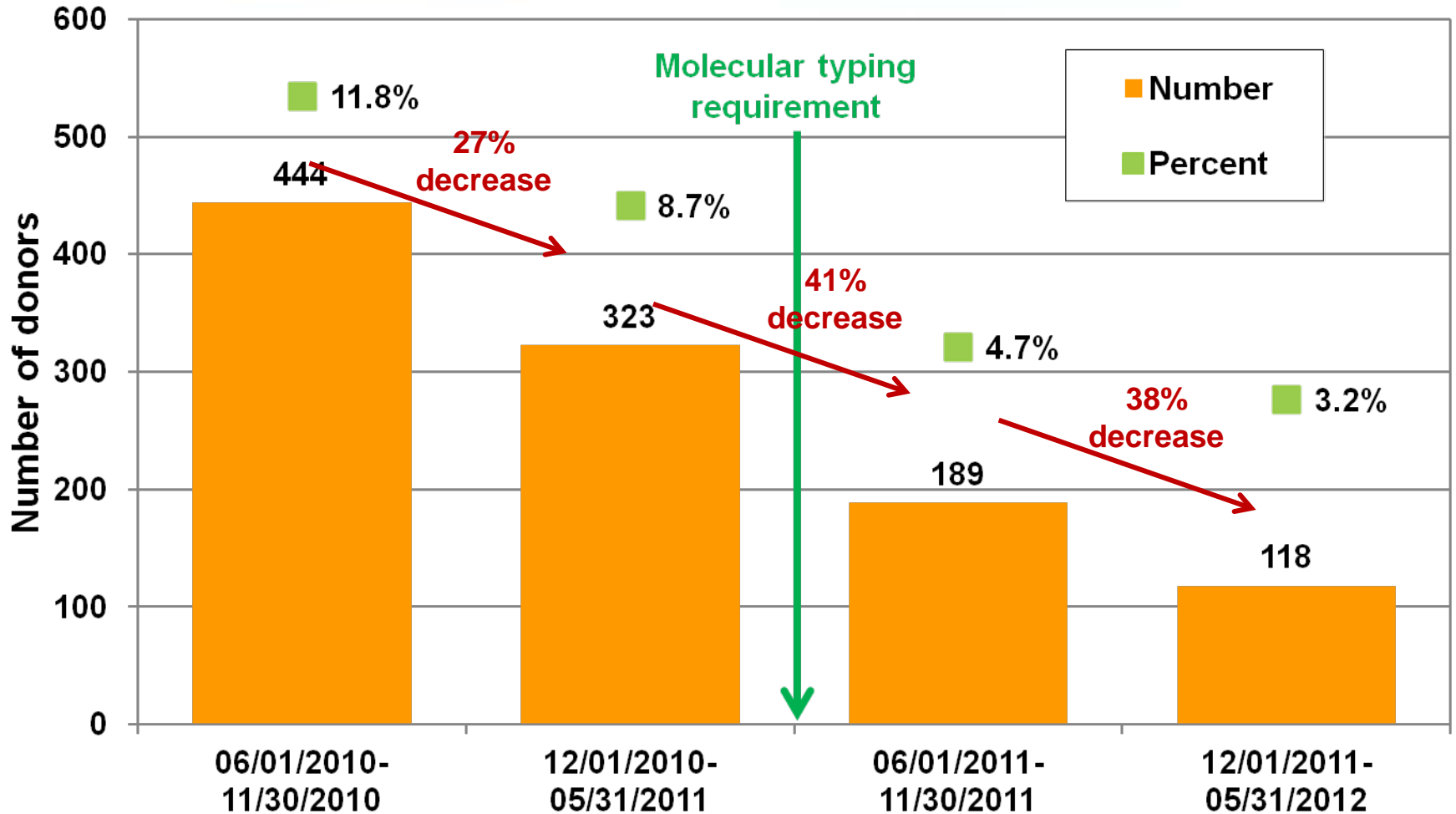


During 15 months prior to policy implementation, the number of offers refused due to a positive crossmatch decreased by 28%. It further decreased in the first and second 15 months after the change (by 65% and 9%, respectively).

# Ongoing Committee Initiatives

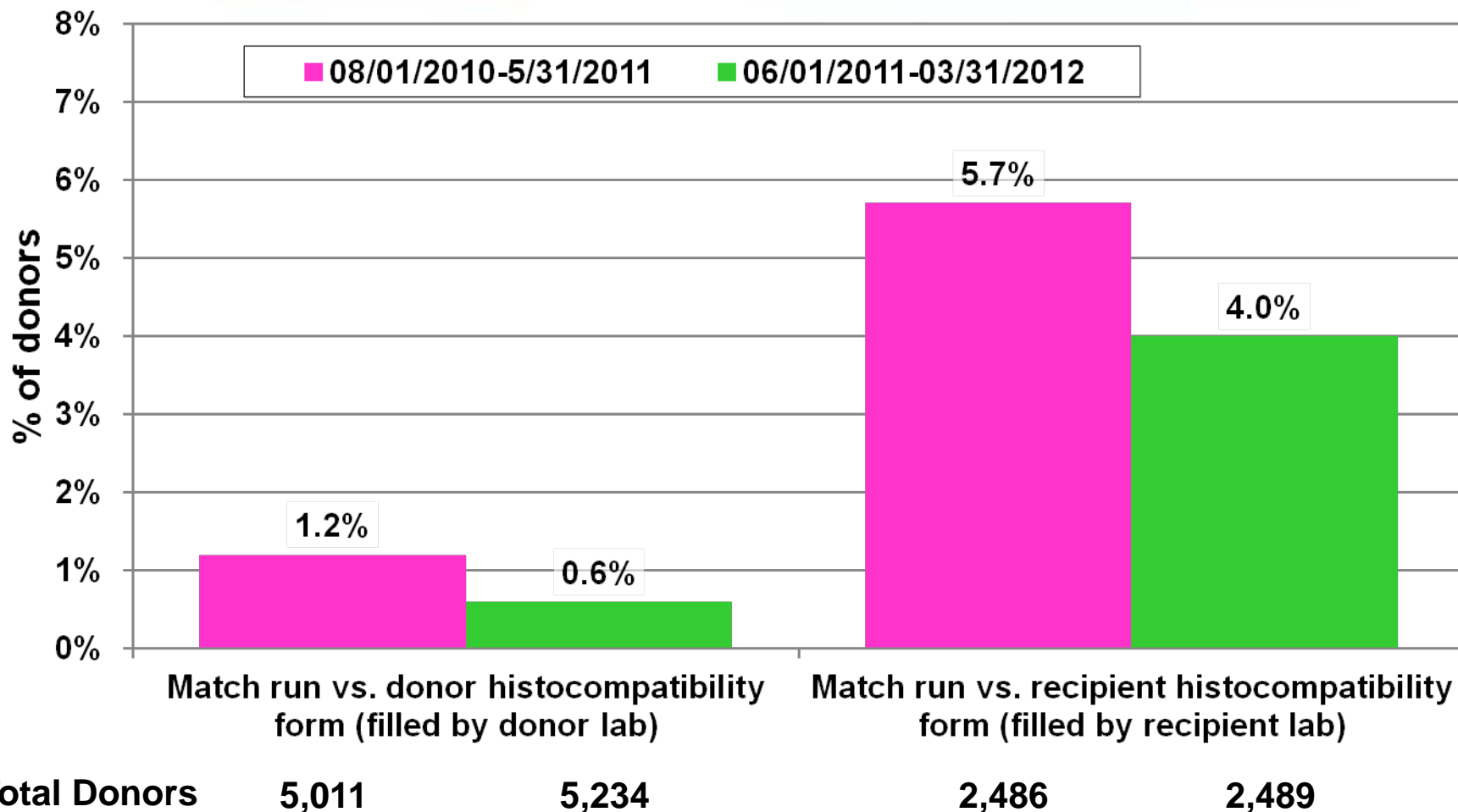
- Monitoring Molecular Typing Requirement for Deceased Kidney, Kidney-Pancreas, and Pancreas Donors

# Number and percentage of donors with broad antigens\*





# Donor HLA Discrepancies\*



# New Committee Initiatives

- Research on benefit of DQ matching/avoiding DQ mismatch
- Exploring feasibility of reporting allele level types in UNet
- Exploring policy proposal with Kidney Committee re: desensitization and CPRA points

# Questions?