

# Liver and Intestinal Organ Transplantation Committee

**W. Kenneth Washburn, MD, Chair**  
**Kim M. Olthoff, MD, Vice-chair**

Report to the Board of Directors  
June 28-29, 2011  
Richmond, Virginia

# COMMITTEE UPDATE

OPTN

UNOS DONATE LIFE

# **Concept Document: Next Steps Toward Improving Liver Distribution**

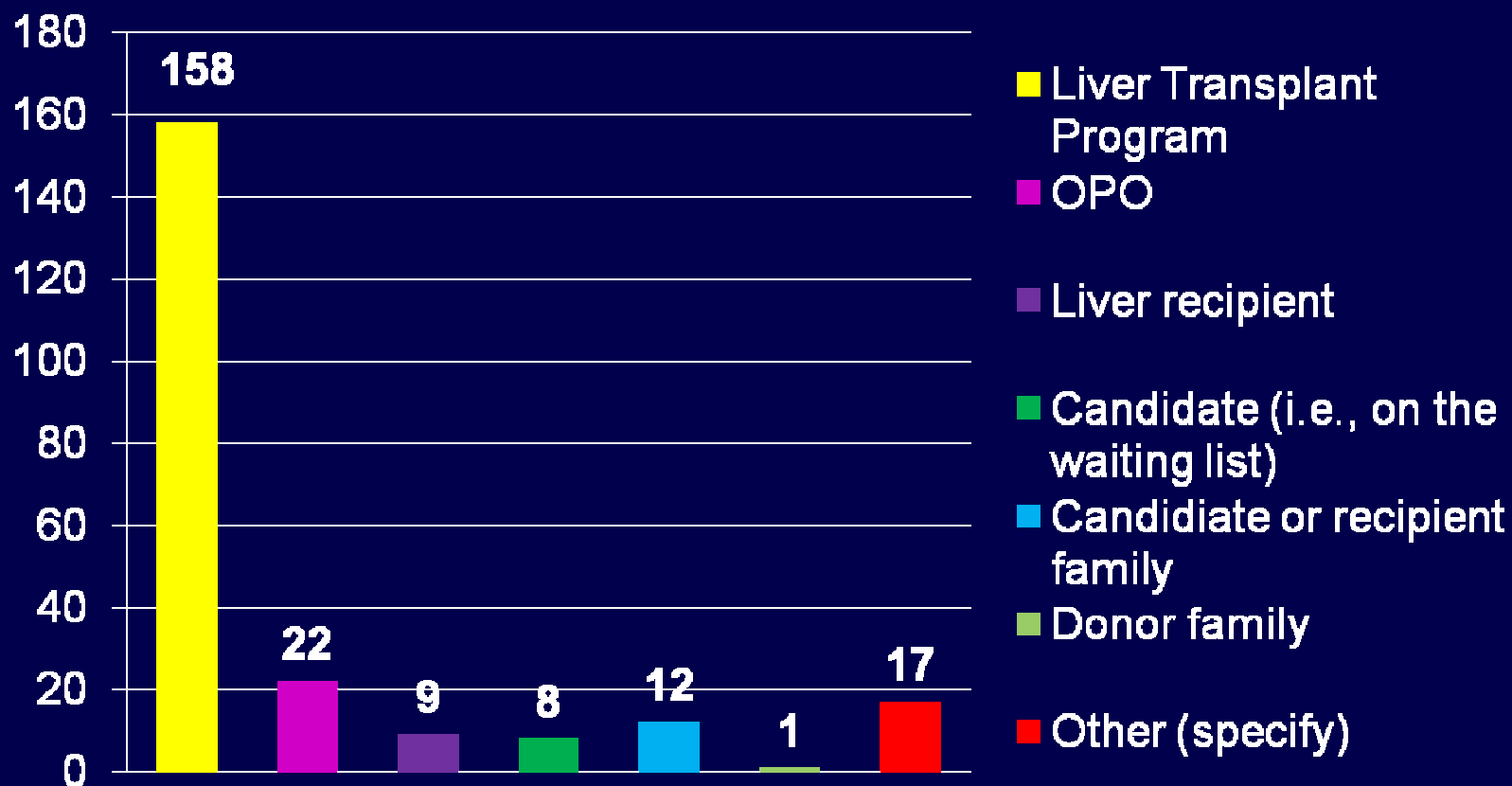
## **Survey Results**

# Background

- RFI: December 18, 2009: 87 responses
- Forum in Atlanta: April 12, 2010: ~160 in attendance plus 70 via LiveMeeting
- Concept Document & survey link 12/31/2010: 227 responses
  - Wide Distribution List

# Responses by Affiliation

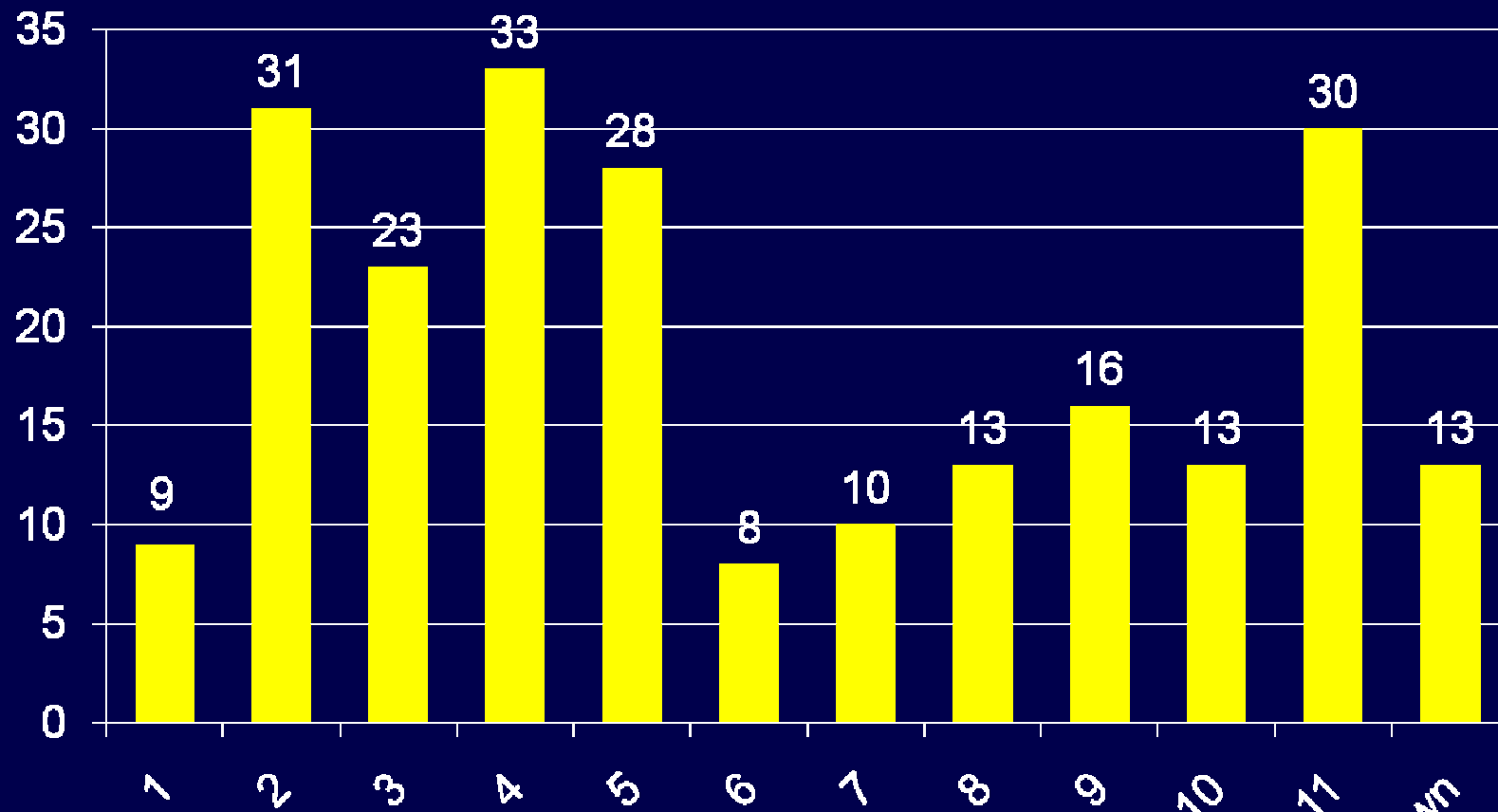
## N=227



Several organizations (ASTS, NYSDOH, NYCLT, OSOTC) also provided letters of response not included in tabulations

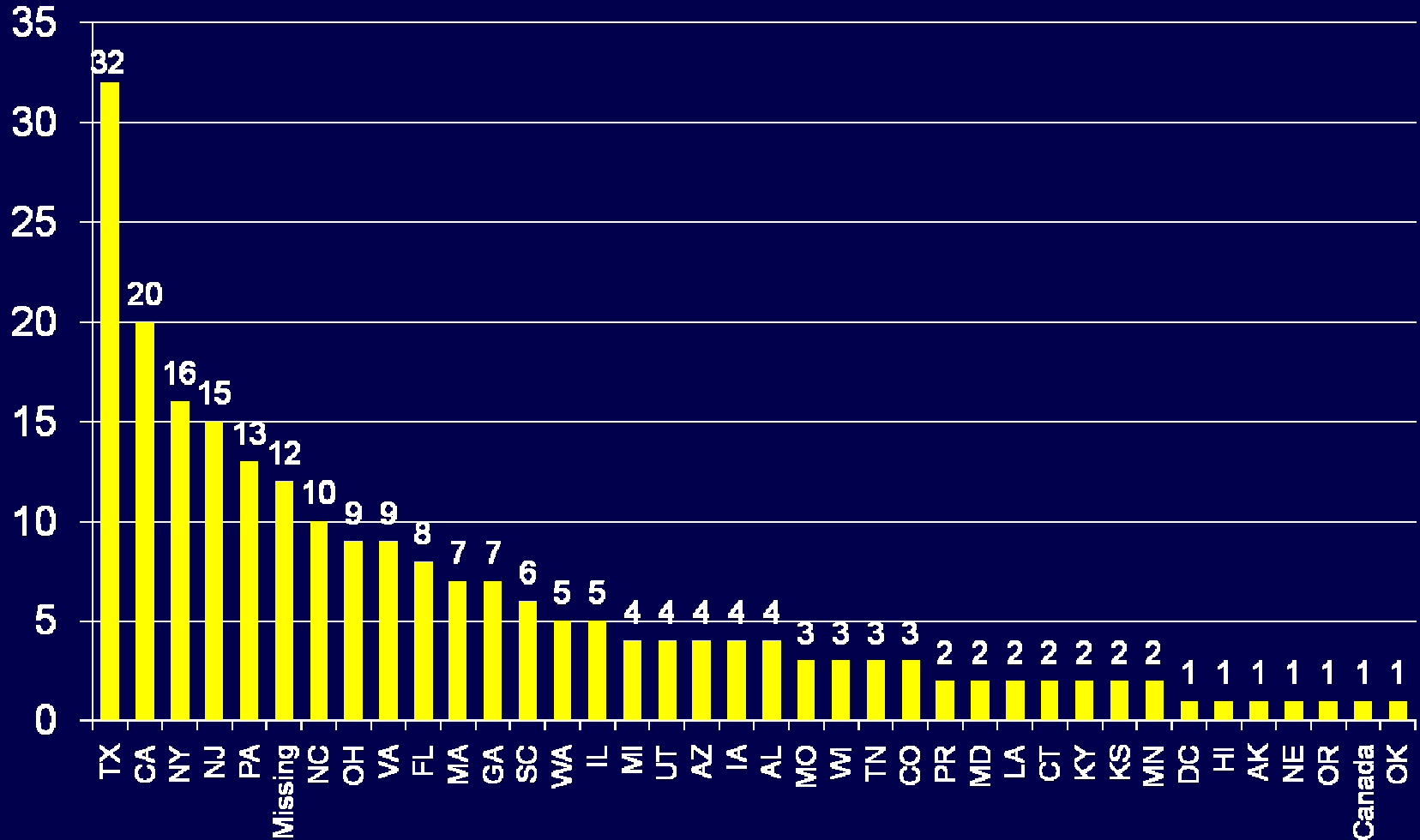
# Responses by Region

(13 with unknown State/Region)

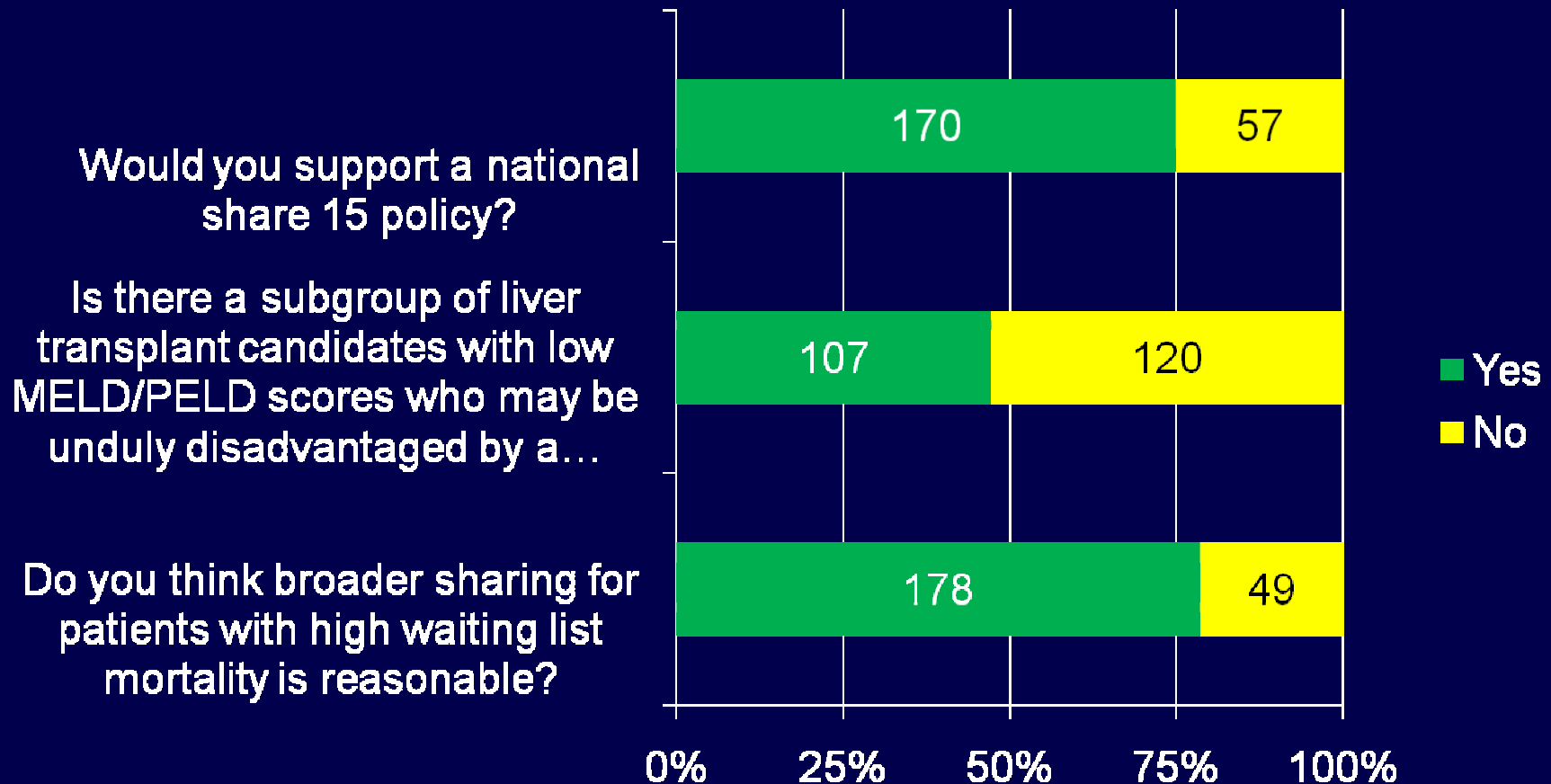


Note: Responses indicated state, not center or region.  
Responses from VA attributed to Region 11

# Responses by State



# Overall Responses





# Cross Tabulation of Tiered Sharing Question

SHARE35	SHARE32	SHARE29	N	%
			84	37.0*
		Yes	43	18.9
	Yes		26	11.5
Yes			43	18.9
Yes	Yes		6	2.6
Yes	Yes	Yes	25	11.0
<b>Total</b>			<b>227</b>	

} 63%

**OPTN** \*Of the 84 indicating 'no' to all three, 21 indicated that they would support some other level of sharing (e.g., 15, 20, all)



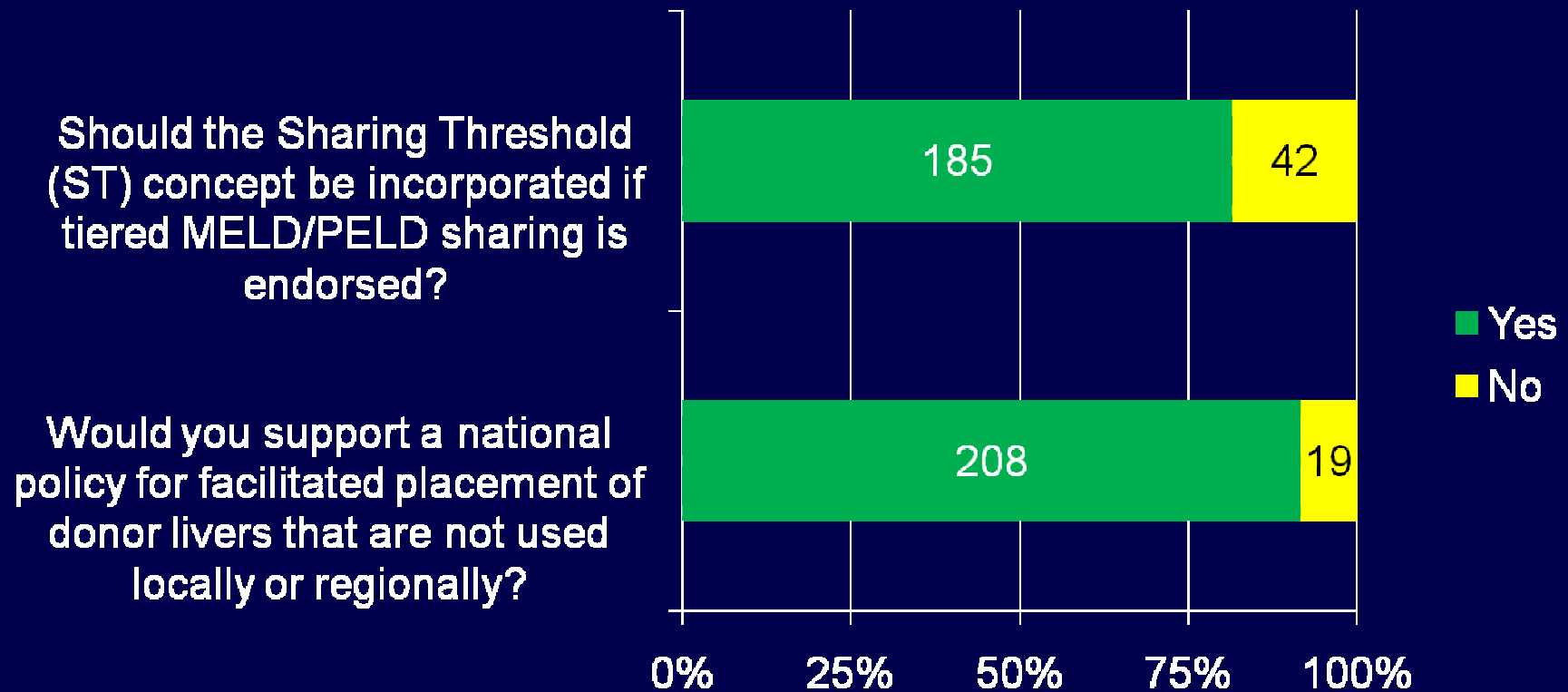
# Cross Tabulation of Tiered Sharing Question – Including “Other”

Share 35	Share 32	Share 29	Other share	None of above	N	%
					16	7.1
				<b>Yes</b>	47	20.7
			<b>Yes</b>		21	9.3
		<b>Yes</b>			43	18.9
	<b>Yes</b>				26	11.5
<b>Yes</b>					41	18.1
<b>Yes</b>			<b>Yes</b>		2	0.9
<b>Yes</b>	<b>Yes</b>				6	2.6
<b>Yes</b>	<b>Yes</b>	<b>Yes</b>			24	10.6
<b>Yes</b>	<b>Yes</b>	<b>Yes</b>	<b>Yes</b>		1	0.4
<b>Total</b>					<b>227</b>	

63  
(28%)

164  
(72%)

# Overall Responses



# Committee Proposal (March 2011)

- Share 15 National
- Share 35 Regional with Sharing Threshold of 3
- Alone or in combination
- With or without ST

# Adult liver allocation algorithm

## Current allocation system

1. Regional status 1A
2. Regional status 1B
3. Local M/P  $\geq 15$
4. Regional M/P  $\geq 15$
5. Local M/P  $< 15$
6. Regional M/P  $< 15$
7. National status 1A
8. National status 1B
9. National M/P  $\geq 15$
10. National M/P  $< 15$

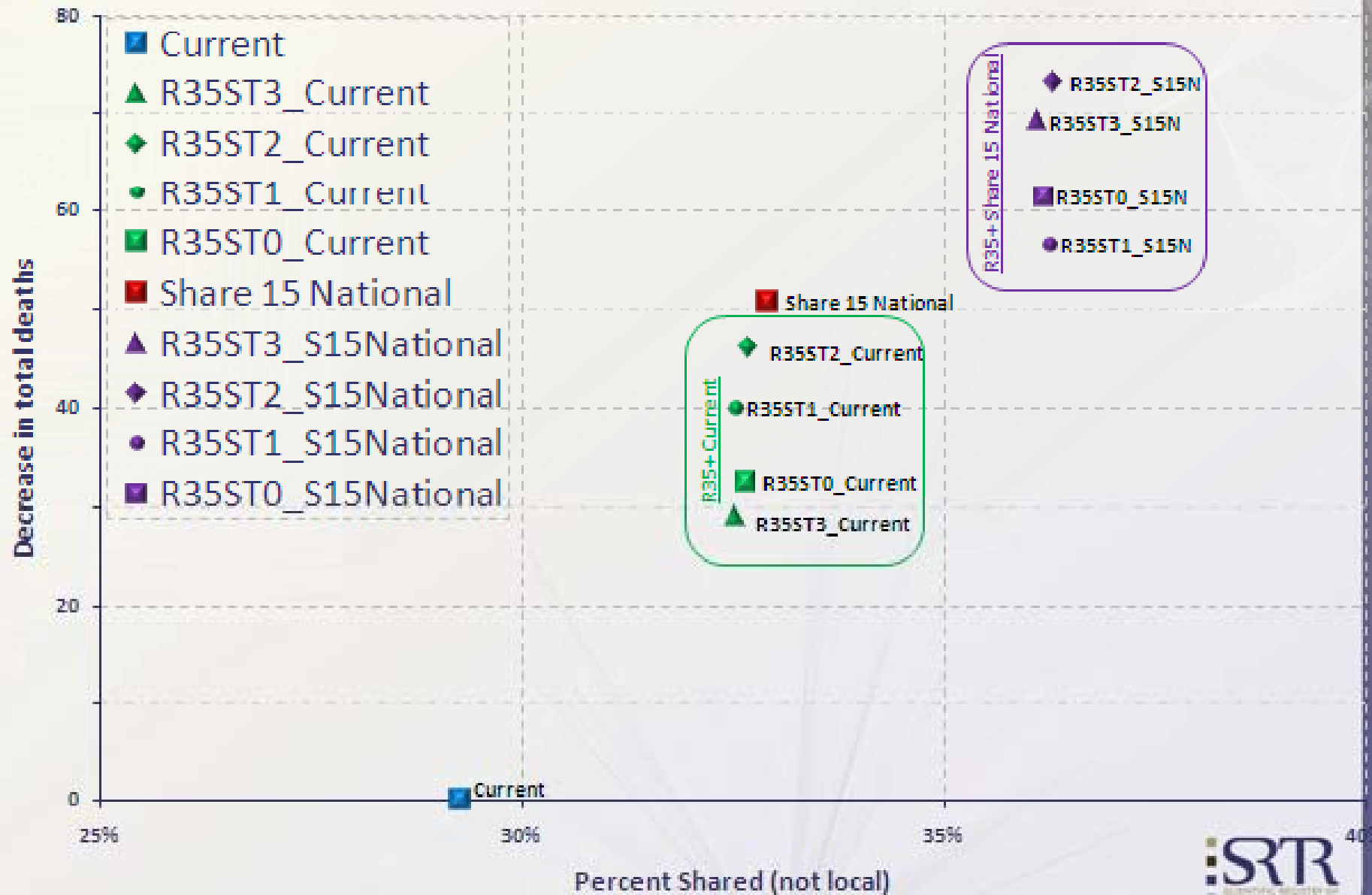
## Share 15 national system

1. Regional status 1A
2. Regional status 1B
3. Local M/P  $\geq 15$
4. Regional M/P  $\geq 15$
5. National status 1A
6. National status 1B
7. National M/P  $\geq 15$
8. Local M/P  $< 15$
9. Regional M/P  $< 15$
10. National M/P  $< 15$

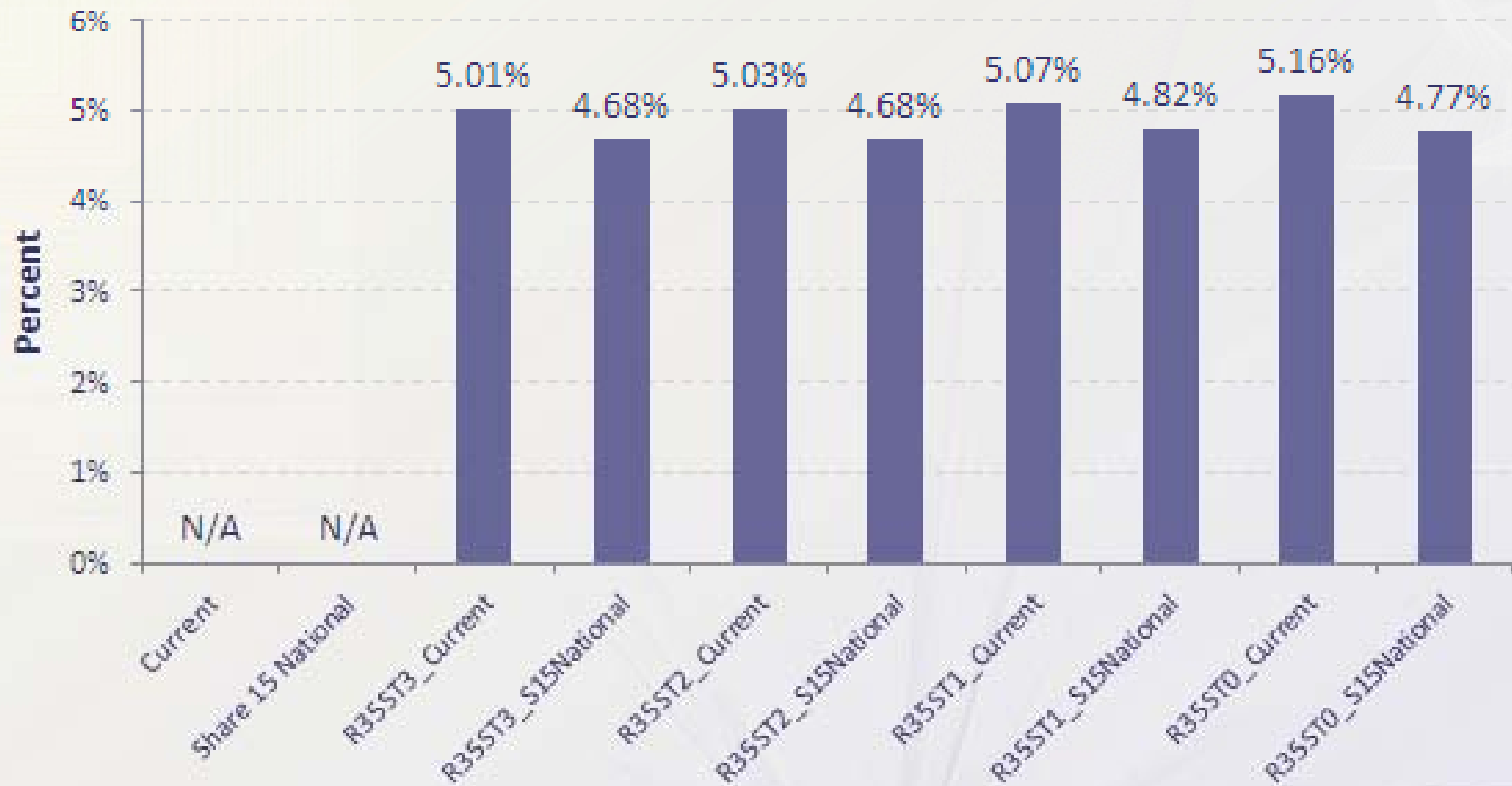
## Regional Share 35+ with Sharing Threshold 3 under Current allocation system

1. Regional status 1A
2. Regional status 1B
3. *Regional Share M/P 35+ with Sharing Threshold 3* →
  - 3.1 Local M/P 37-40
  - 3.2 Regional M/P 40
  - 3.3 Local M/P 36
  - 3.4 Regional M/P 39
  - 3.5 Local M/P 35
  - 3.6 Regional M/P 38
  - 3.7 Local M/P 34
  - 3.8 Regional M/P 37
  - 3.9 Local M/P 33
  - 3.10 Regional M/P 36
  - 3.11 Local M/P 32
  - 3.12 Regional M/P 35
4. Local M/P 15-31
5. Regional M/P 15-34
6. Local M/P < 15
7. Regional M/P < 15
8. National status 1A
9. National status 1B
10. National M/P ≥ 15
11. National M/P < 15

# Decrease in Total Deaths vs. Percent Shared



## Percent of liver transplants benefit from the sharing thresholds system among all transplants





# Path Forward

- Spring/Summer 2011: Finalizing evidence/data/modeling for fully-formed proposal
- Fall/Winter 2011: Public Comment
- Early 2012: Evaluate and respond to public comment, draft final proposal for Board consideration
- June 2012: Submission to the Board

# Other Updates

- Three Proposals for Public Comment  
March-June 2011
  - Improved HCC Imaging
  - Reduce Waiting List Mortality for Adults  
Liver-Intestine Candidates
  - Split Liver AAS
- Will Review Comments in July
- Possible Board Submission November  
2011

# Other Updates

- MELD Enhancements & Exceptions Subcommittee
- Liver Utilization Working Group
- Ongoing Review of Status 1 Cases