

# 2016 ODT Effort

## Background on Collaborative

Jim Burdick  
Prof. of Surgery  
Johns Hopkins Medicine

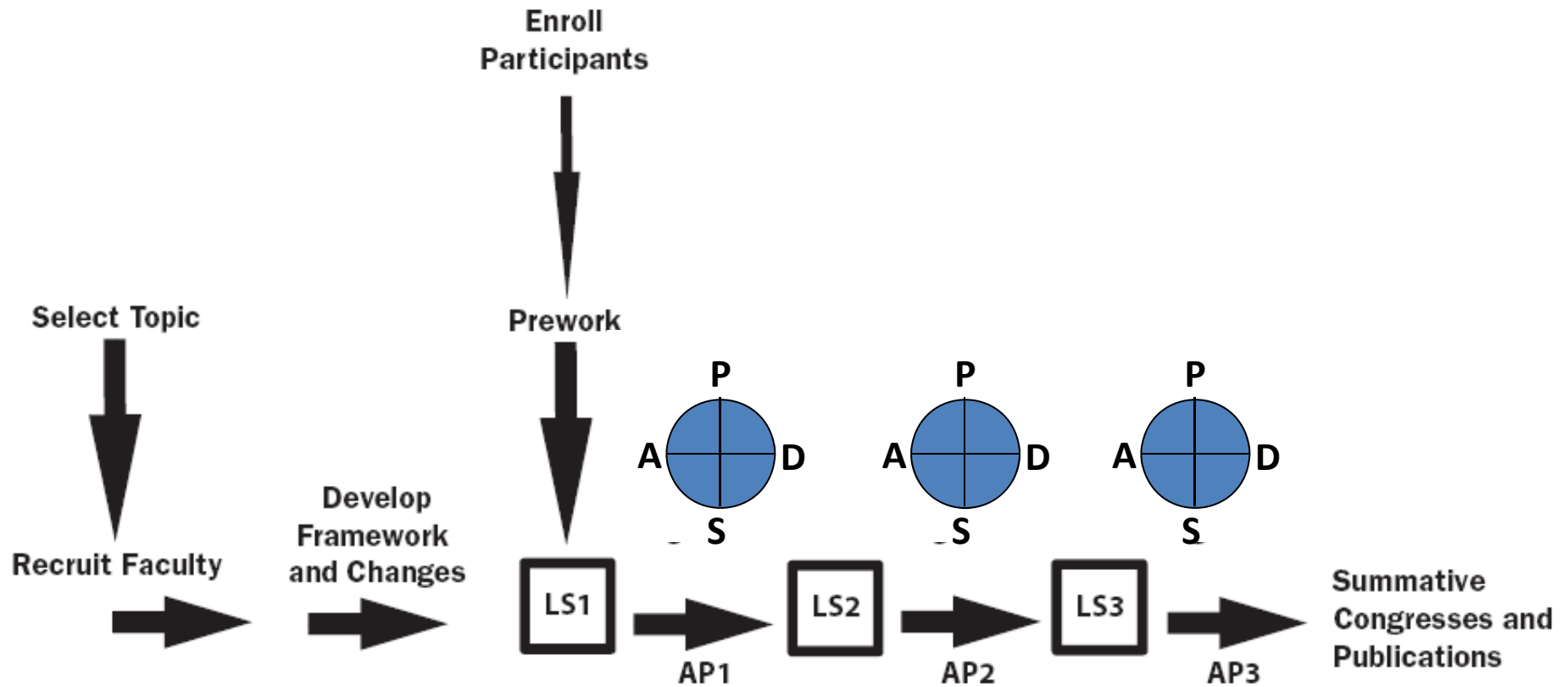
# FEDERAL SUPPORT FOR ORGAN DONATION

- Social and Behavioral Grants
- Clinical Intervention Grants, e.g. UDCD
- Professional Education projects
- Public Education and Registry Grants
- Donation promotion:
  - Calendars and Health Passports
  - Traffic Ads
  - Multiple meetings and events
  - Primary physician kits



# Collaborative “Engine”

Figure 2. Breakthrough Series Model

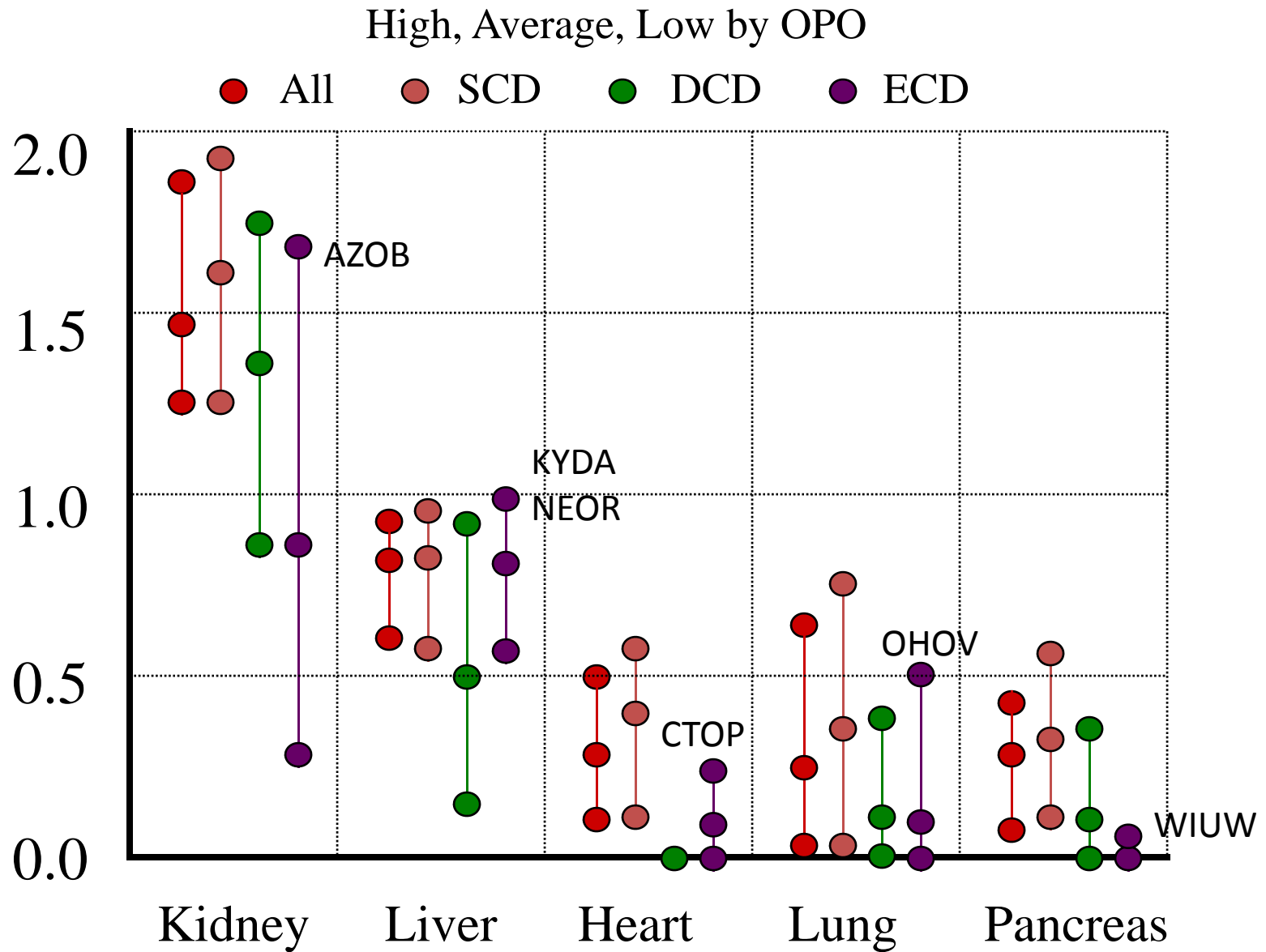


LS1: Learning Session  
 AP: Action Period  
 P-D-S-A: Plan-Do-Study-Act

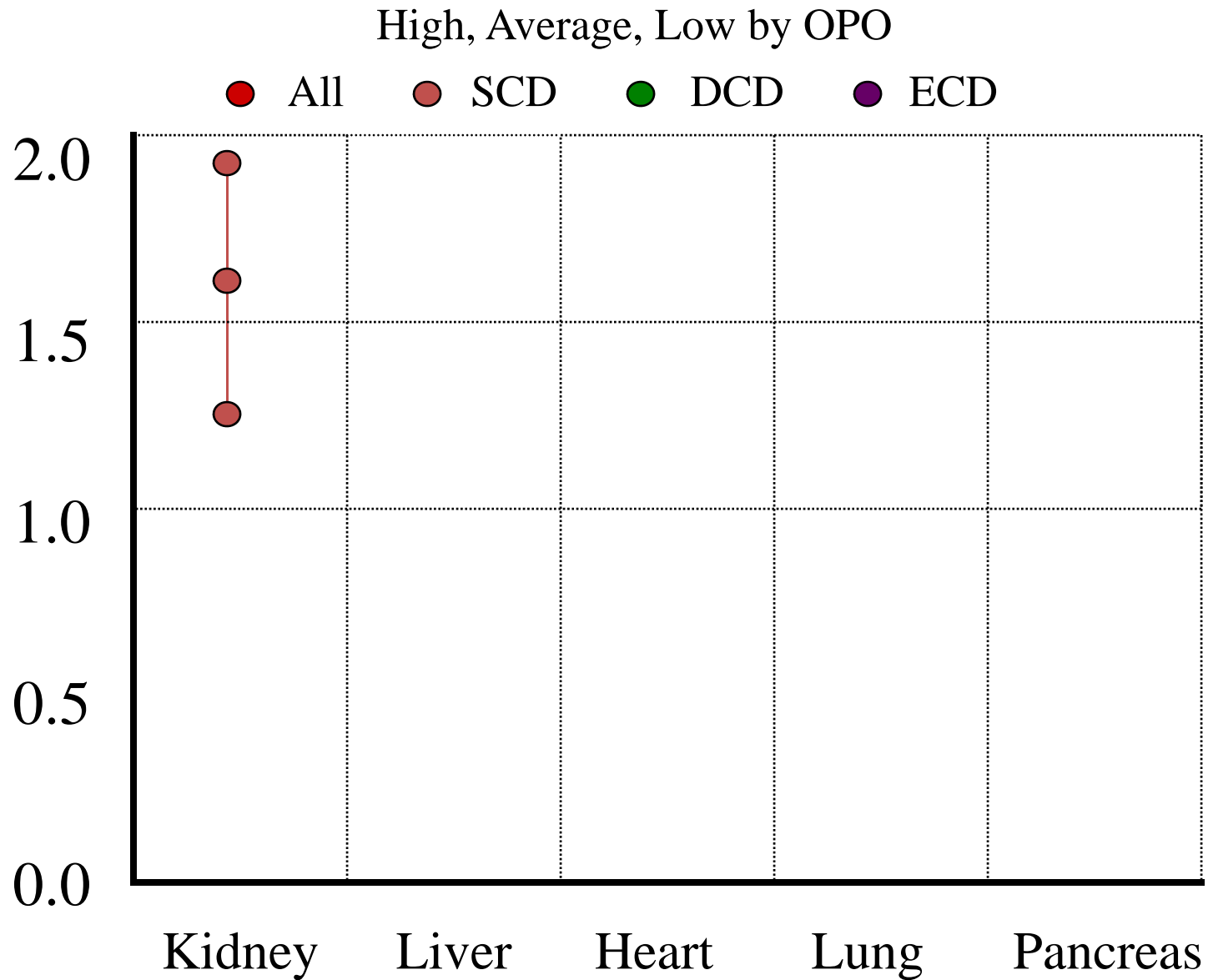
**Supports:**  
 Email • Visits • Phone Conferences • Monthly Team Reports • Assessments



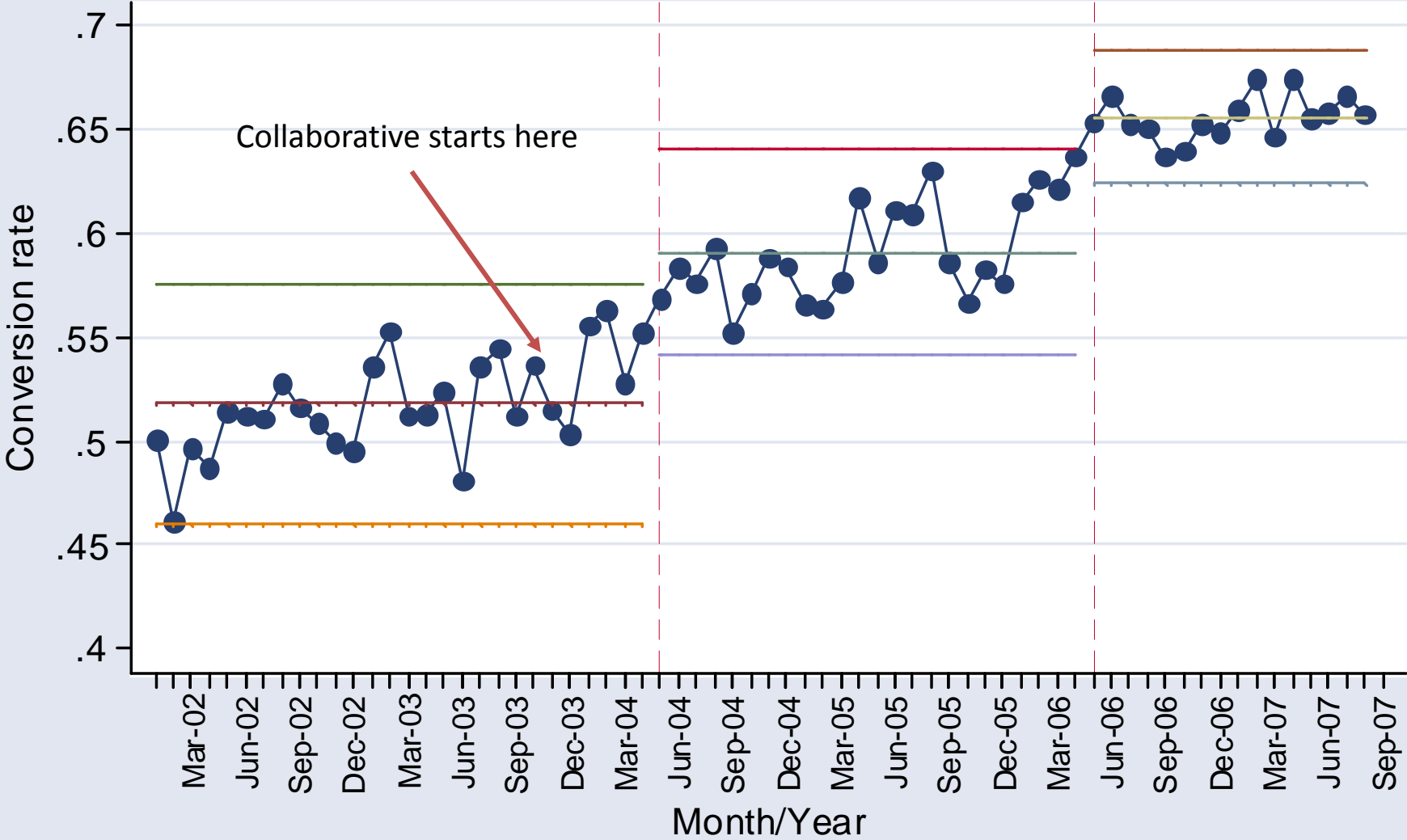
# ORGANS TRANSPLANTED PER DONOR, 2004



# ORGANS TRANSPLANTED PER DONOR, 2004



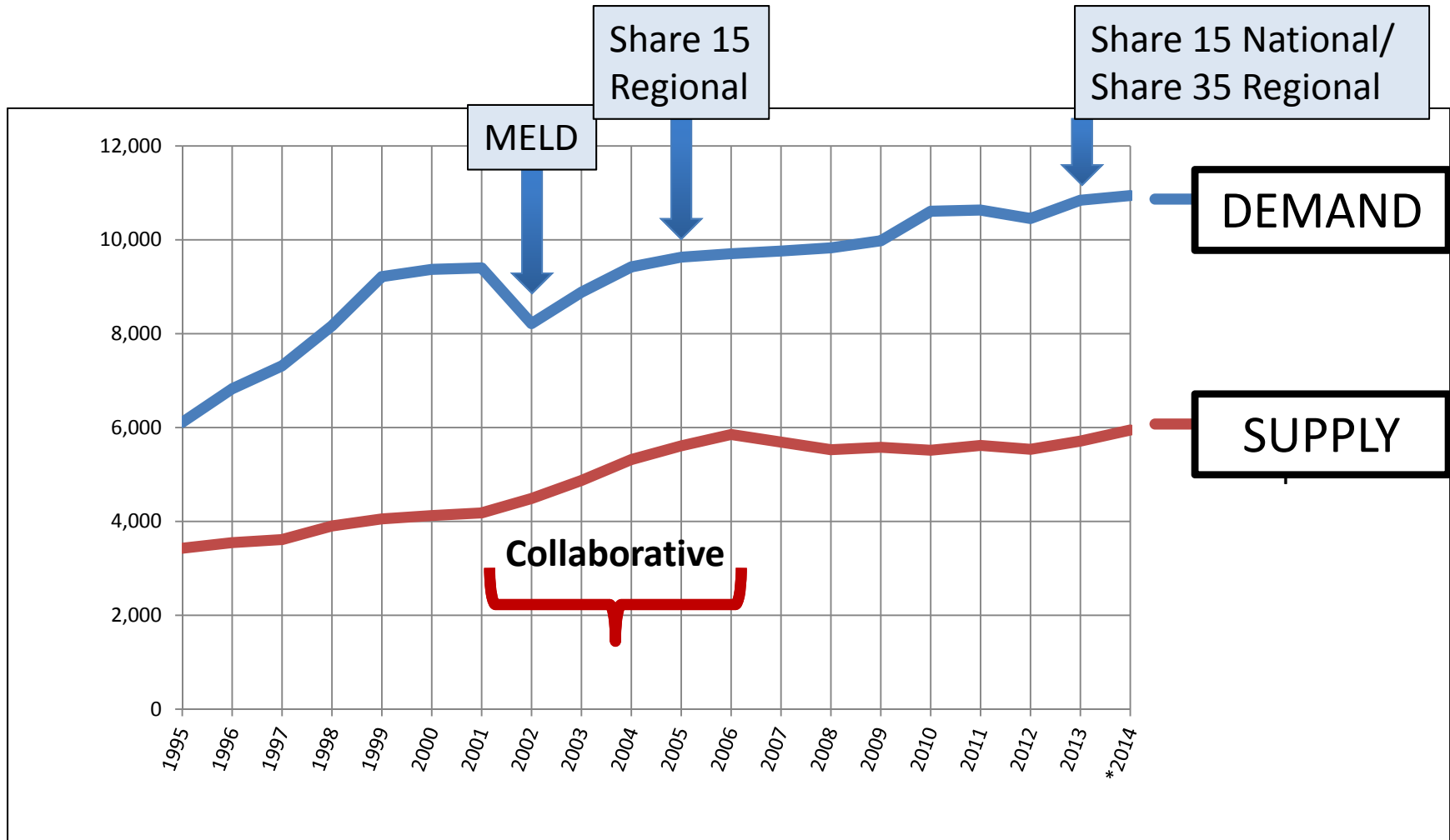
# Conversion Rate by Month, 1999 - 08/2007



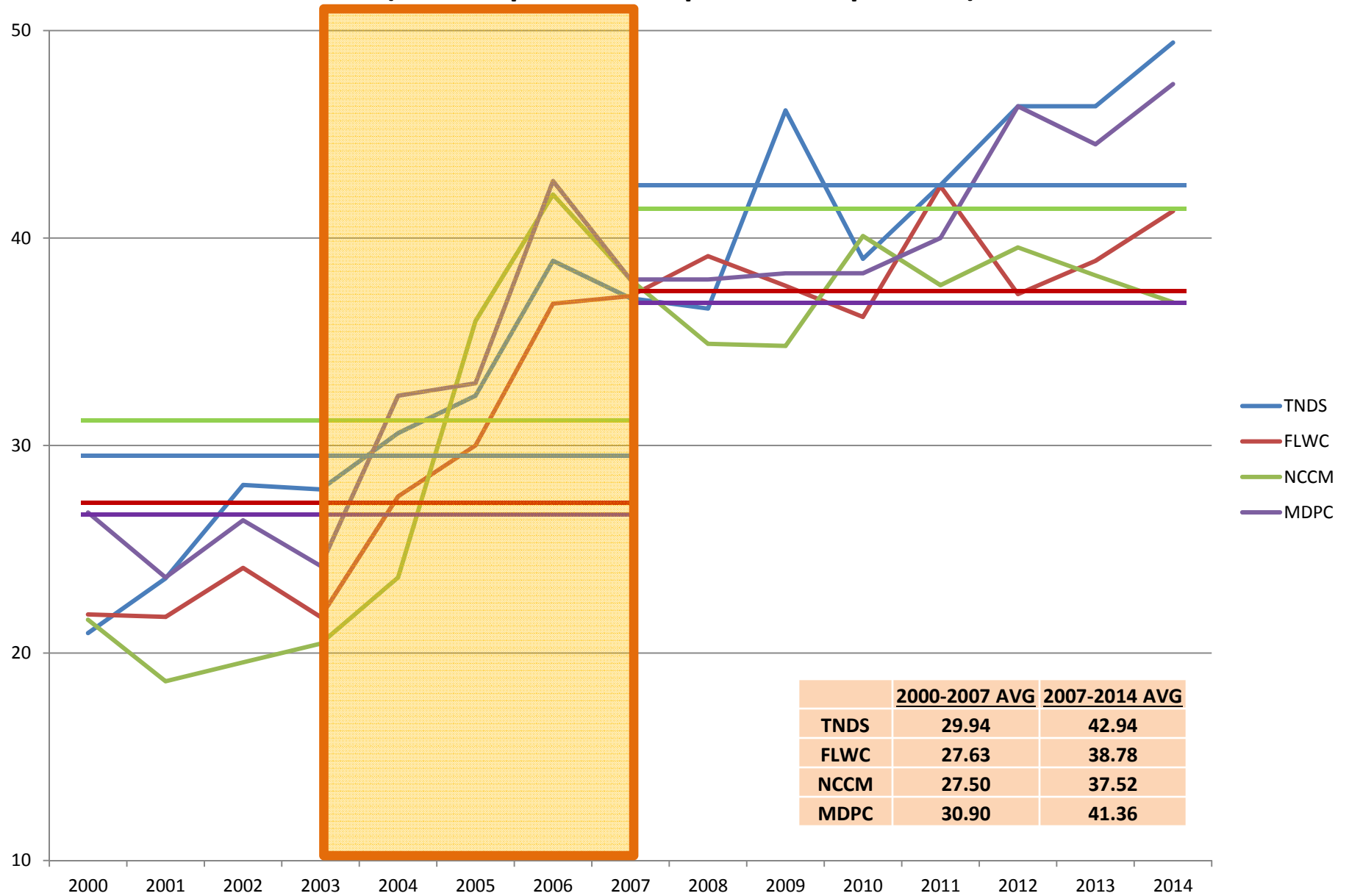
Data source: OPTN database as of 12/2007

CL based on data from 01/02-04/04 05/04-04/06

# Waiting List Additions

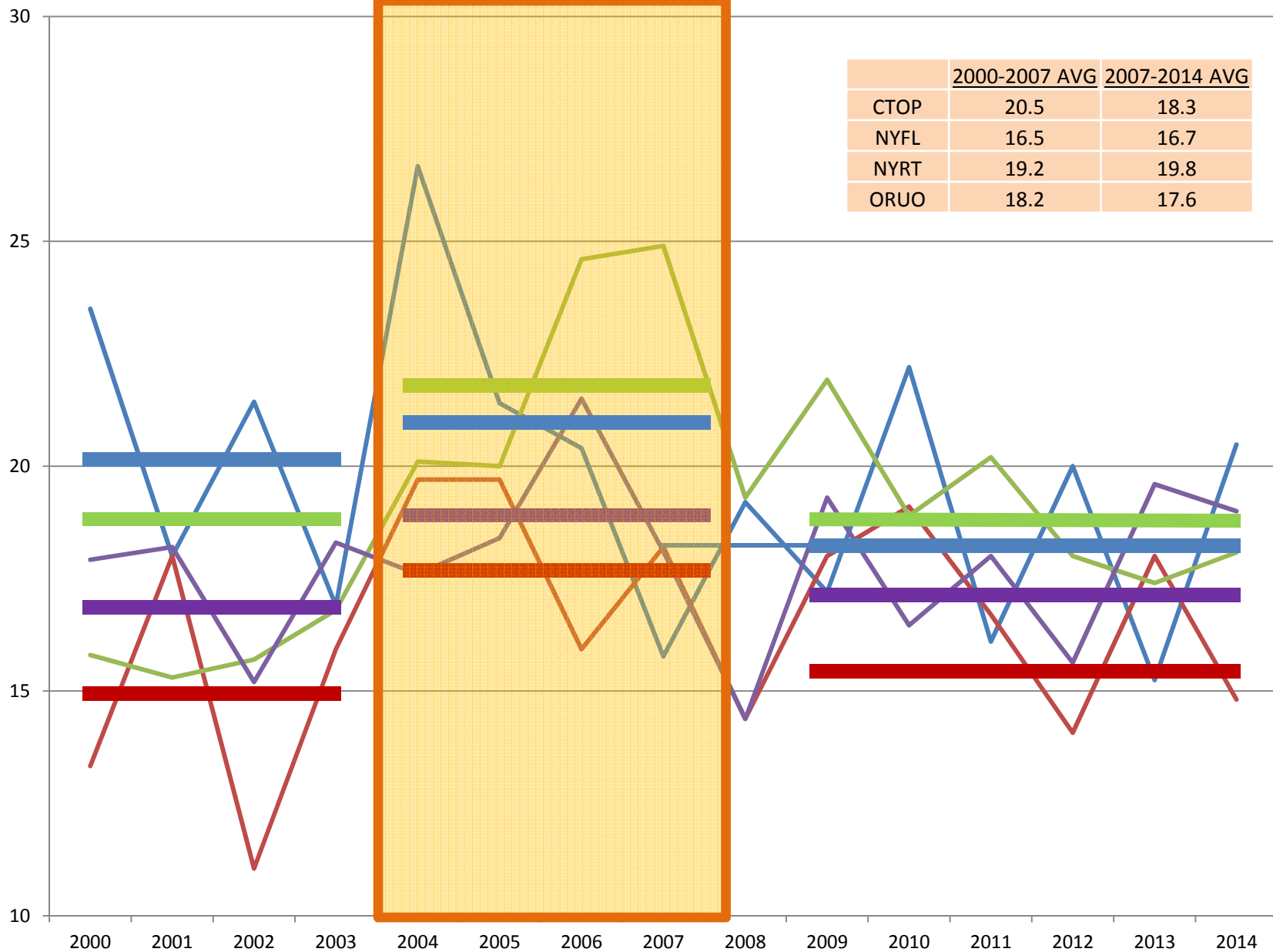


## Top 4 highest Quartile collaborative effect (Based upon donors per million per DSA)

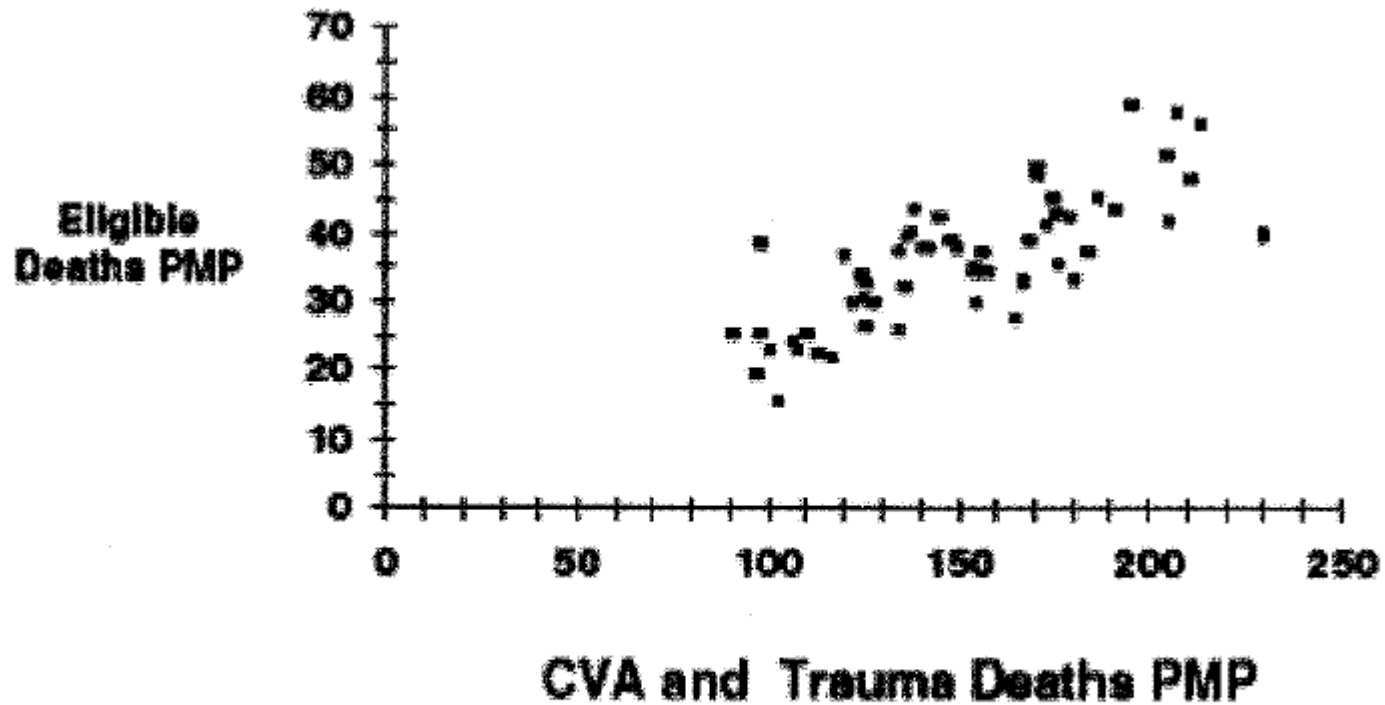




## Differential Collaborative effect lowest quartile lowest 4 (data in donors per million)

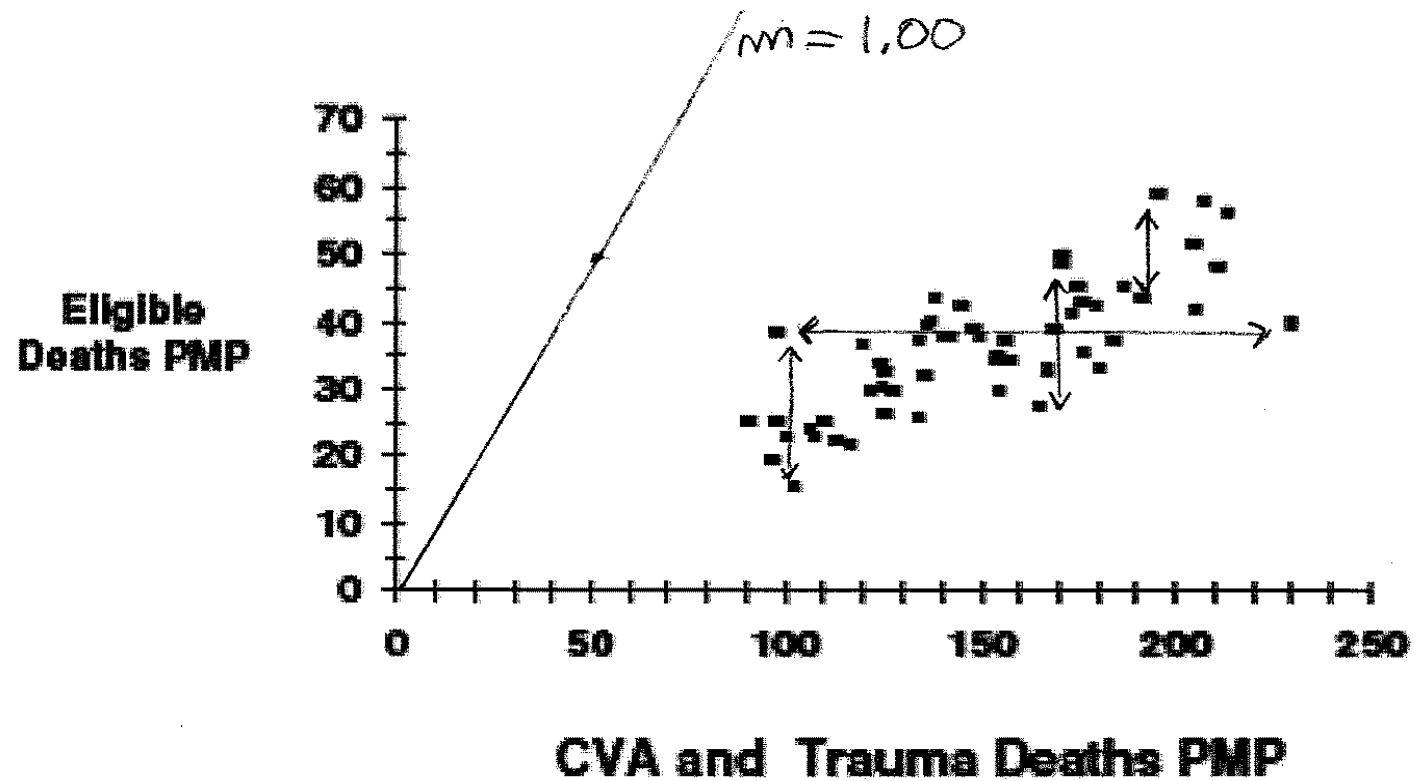


# SHEEHY et al



R-square = 0.79

# OPPORTUNITIES?



R-square = 0.79

R = 0.89

# MEASUREMENT

- Conversion Rate
- Donors per ..... T/CVA?
- Deaths on WL (per ... ?MELD)
  - Go forward using MELD and updating it in parallel
  - MELD accurate across geography?
  - MELD correction for HCC (Markman)?
  - MELD in intrinsic renal disease (allocation)?
- Impact on social media – Facebook, Twitter

# COLLABORATION

- National stewardship for best use
  - Donation is based on altruism
  - Requires professional effort outside local program
  - Access to care not universal but expectation of donation IS
- Transplant program <-> OPO <-> Hospital
  - Constructive, not commoditized competition
- Allocation: Burdick et al 2001 Transplantation, 72:759-763.
  - \*\*\* HAPPENSTANCE
- Transplant program acceptance (!"discards"!)
  - ? Do ECD, DCD by acceptance record to increase efficiency
  - ? Weekends/Holidays impact on acceptance
- To help flagging OPOs and assist spread of good OPO practices, have visiting coordinator exchanges, not better rules (Community Practice Action Guide NO)

# PLANNING

- Collaborative or ... ?
- Parent organization (ASTS or ...)
- Tx programs and OPOs sitting down together ...
- Guru for the collaborative and the institution
- Framework, Data Gathering, Learning Document
- Choosing Faculty
- Identifying Teams (OPO,Hosp,TxProgram)
- Set broad highly challenging but measurable goals
- Include new technology – perfusion, Hep C Rx